

The information on the [Erudus System](#) has been supplied by the manufacturers of the products and, whilst the owners of the Erudus System take steps to ensure the information is regularly updated, they give no warranty and no guarantee that the information is accurate. Product information and ingredients may change, please always read product labels carefully in addition to using the information provided by Erudus One.

We do not accept liability for any inaccuracies or incorrect information contained on this site. Please visit <http://www.erudus.com/terms-and-conditions> for full terms and conditions.

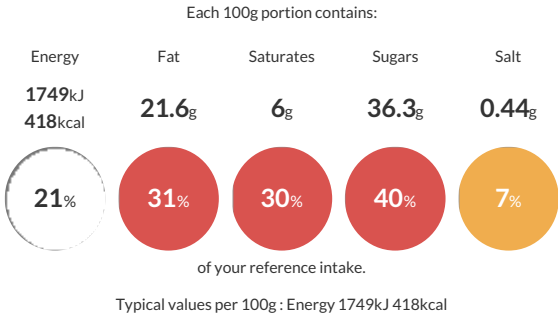
Chocolate Cookies and Cream Cake pre-cut 1x16

Short Product Name:
Chocolate Cookies and Cream Cake

A Frozen chocolate sponge cake filled and topped with buttercream infused with chocolate biscuit crumb and finished with chocolate sandwich biscuits with vanilla flavour filling and dark chocolate flavoured drizzle.

Traded Unit GTIN: 5060082386046 Internal GTIN: Supplier : Sussex Bakes Ltd T/A More Food Suppliers Product Code : WS272

Reference Intake



Nutritional Information

Typical Values	Per 100g
Energy	1749kJ 418kCal
Carbohydrates	52.6g
of which sugars	36.3g
Fat	21.6g
of which saturates	6g
Fibre	1.6g
Protein	3.9g
Salt	0.44g

Allergy Information

Key: Contains May Contain


Contains Cereal/Gluten


Contains Milk


Contains Eggs


Does Not Contain Peanuts


May Contain Nuts


Does Not Contain Crustaceans


Does Not Contain Mustard


Does Not Contain Fish


Does Not Contain Lupin


Does Not Contain Sesame


Does Not Contain Celery


Contains Soya


Does Not Contain Molluscs


Does Not Contain Sulphur Dioxide

Allergen Statement
May contain traces of nuts.

Ingredients

Sugar, Pasteurised Free Range Whole EGG, Wheat Flour (WHEAT Flour, Calcium Carbonates, Iron, Niacin, Thiamin), Rapeseed Oil, Water, Butter (MILK), Margarine (Palm Oil, Rapeseed Oil, Water, Emulsifier (Mono- and Diglycerides of Fatty Acids)), Filled Chocolate Biscuit Pieces (4.0%) (WHEAT Flour, Sugar, Palm Oil, Rapeseed Oil, Fat Reduced Cocoa Powder, WHEAT Starch, Glucose-Fructose Syrup, Raising Agents (Ammonium Carbonates, Potassium Carbonates, Sodium Carbonates), Salt, Emulsifier (SOYA Lecithins), Acidity Regulator (Sodium Hydroxide), Flavouring), Fat Reduced Cocoa Powder (3.0%), Chocolate Biscuit Crumb (Wheat Flour (WHEAT Flour, Calcium Carbonate, Iron, Niacin, Thiamin), Vegetable Oils (Palm, Rapeseed), Sugar, Cocoa Powder, Invert Sugar Syrup, Raising Agent (Sodium Carbonate), Salt), Humectant (Glycerol), Dried Glucose Syrup, Whey Powder (MILK), Dark Chocolate Flavoured Coating (Sugar, Vegetable Oil (Palm Kernel, Palm), Fat Reduced Cocoa Powder, Wheat Flour (WHEAT Flour, Calcium Carbonates, Iron, Niacin, Thiamin), Whey Powder (MILK), Emulsifiers (Lecithins (SOYA, Sunflower, Rapeseed), Polyglycerol Polyricinoleate), Natural Flavouring), WHEAT Starch, Modified Potato Starch, Raising Agents (Disodium Phosphates, Sodium Carbonates, Potassium Hydrogen Carbonate), WHEAT Gluten, Emulsifiers (Mono- and Diglycerides of Fatty Acids, Sodium Stearoyl-2 Lactylate), Stabilisers (Sodium Carboxymethylcellulose, Guar Gum), Natural Flavouring.

Dietary Information

Key: Suitable for


Suitable for Vegetarian


May not be suitable for Vegan


May not be suitable for Kosher


May not be suitable for Halal


May not be suitable for Coeliac