

Supplier's Product Code :
 Product Added :
 Last Updated by Supplier :
 erudus id :

20214143
 31 March 2026
 31 March 2026
 92f6084c9bd947299aa4188003341c8c



The information on the Erudus System has been supplied by the manufacturers of the products and, whilst the owners of the Erudus System take steps to ensure the information is regularly updated, they give no warranty and no guarantee that the information is accurate. Product information and ingredients may change, please always read product labels carefully in addition to using the information provided by Erudus One.

We do not accept liability for any inaccuracies or incorrect information contained on this site. Please visit <http://www.erudus.com/terms-and-conditions> for full terms and conditions.

KFF Cherry and Blueberry Crunch

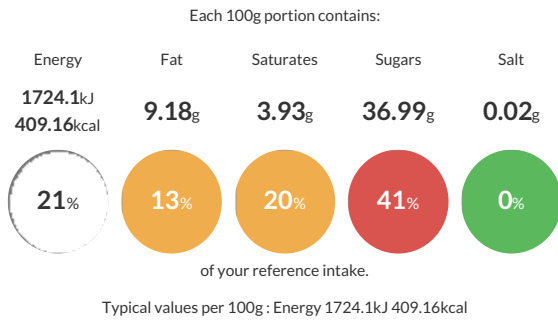
Short Product Name:

Cherry and Blueberry Crunch

A mix of cereals with dried fruits

Traded Unit GTIN: - Internal GTIN: Supplier: Alara Wholefoods Limited Suppliers Product Code: 20214143

Reference Intake



Nutritional Information

Typical Values	Per 100g
Energy	1724.1kJ 409.16kCal
Carbohydrates	70.44g
of which sugars	36.99g
Fat	9.18g
of which saturates	3.93g
Fibre	6.69g
Protein	7.85g
Salt	0.02g

Allergy Information

Key: Contains May Contain



Allergen Statement

Contains Gluten. Packed in a factory that handles cereals containing milk, peanuts, nuts, sesame, soya and Sulphur dioxide.

Dietary Information

Key: Suitable for



Ingredients

Oat Crispy Crunch [Wholegrain OAT FLAKES (53%), Sugar, Crisp Rice (15%) (Rice Flour, Sugar, Malt Extract [BARLEY]), Rapeseed Oil, Honey (2%), Caramelised Sugar Syrup Powder] (76.69%), Raisins Flame[Raisin 99.5%, sunflower oil 0.5%](20.45%), Cherries Sour Morell[Cherries sour Morello (74.5%), sugar(25%), Sunflower oil(<0.5%)](2.04%), Blueberry FD organic (0.82%)