

The information on the [Erudus System](#) has been supplied by the manufacturers of the products and, whilst the owners of the Erudus System take steps to ensure the information is regularly updated, they give no warranty and no guarantee that the information is accurate. Product information and ingredients may change, please always read product labels carefully in addition to using the information provided by Erudus One.

We do not accept liability for any inaccuracies or incorrect information contained on this site. Please visit <http://www.erudus.com/terms-and-conditions> for full terms and conditions.

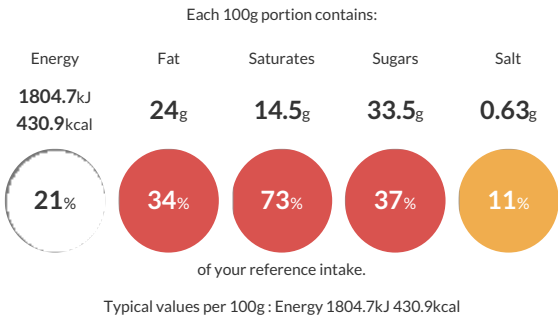
Morello Cherry Blondie - 10 x 14 ptn

Short Product Name:
Morello Cherry Blondie

A fudgy white chocolate blondie with large chunks of white chocolate and whole morello sour cherries throughout. Topped with white chocolate flick and crushed freeze-dried sour cherries. Pre-portioned into 14 rectangular slices per tray. 10 trays per case.

Traded Unit GTIN: 5060421259598 Internal GTIN: 5060421259581 Supplier : Cakesmiths Group Limited Suppliers Product Code: Q2191

Reference Intake



Nutritional Information

Typical Values	Per 100g
Energy	1804.7kJ 430.9kCal
Carbohydrates	47.3g
of which sugars	33.5g
Fat	24g
of which saturates	14.5g
Fibre	0.9g
Protein	6.4g
Salt	0.63g

Allergy Information

Key: Contains May Contain


Contains Cereal/Gluten


Contains Milk


Contains Eggs


May Contain Peanuts


May Contain Nuts


Does Not Contain Crustaceans


Does Not Contain Mustard


Does Not Contain Fish


Does Not Contain Lupin


May Contain Sesame


Does Not Contain Celery


Contains Soya


Does Not Contain Molluscs


May Contain Sulphur Dioxide

Allergen Statement
Made in our bakery that handles cereals containing gluten, milk, egg, soya, sulphites, and tree nuts (source manufacturer may handle peanuts and sesame).

Please note: Product may contain fragments of or whole cherry stone/pit.

Ingredients

White chocolate 25% (sugar, whole **MILK** powder, cocoa butter, skimmed **MILK** powder, emulsifier (**SOYA** lecithin), natural vanilla flavouring), **WHEAT** flour (**WHEAT** flour, calcium carbonate, iron, niacin, thiamin), sugar, salted butter (butter (**MILK**) salt), **EGG**, morello sour cherries 11%, sweetened condensed **MILK** (**MILK**, sugar), vanilla extract (vanilla extract, sugar), coconut oil, salt, freeze-dried cherries < 1%, raising agents (diphosphates, sodium carbonates).

Dietary Information

Key: Suitable for


Suitable for Vegetarian


May not be suitable for Vegan


May not be suitable for Kosher


May not be suitable for Halal


NO DATA for Coeliac