

The information on the [Erudus System](#) has been supplied by the manufacturers of the products and, whilst the owners of the Erudus System take steps to ensure the information is regularly updated, they give no warranty and no guarantee that the information is accurate. Product information and ingredients may change, please always read product labels carefully in addition to using the information provided by Erudus One.

We do not accept liability for any inaccuracies or incorrect information contained on this site. Please visit <http://www.erudus.com/terms-and-conditions> for full terms and conditions.

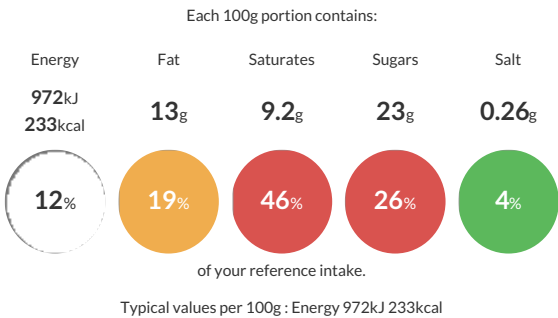
# Jude's Salted Caramel Stickbars 20 x 80ml

Short Product Name:  
Salted Caramel Stickbars

Salted caramel flavoured ice cream with salted caramel sauce, coated with Belgian milk chocolate and caramel pieces.

Traded Unit GTIN: 05060081116194 Internal GTIN: 5060081116095 Supplier : **Judes Ices** Suppliers Product Code : **FH0039**

## Reference Intake



## Nutritional Information

Typical Values	Per 100g
Energy	972kJ 233kCal
Carbohydrates	25g
of which sugars	23g
Fat	13g
of which saturates	9.2g
Fibre	-g
Protein	2.4g
Salt	0.26g

## Allergy Information

Key: **Contains** **May Contain**

  
Does Not Contain Cereal/Gluten

  
Contains Milk

  
Does Not Contain Eggs

  
May Contain Peanuts

  
May Contain Nuts

  
Does Not Contain Crustaceans

  
Does Not Contain Mustard

  
Does Not Contain Fish

  
Does Not Contain Lupin

  
Does Not Contain Sesame

  
Does Not Contain Celery

  
Contains Soya

  
Does Not Contain Molluscs

  
Does Not Contain Sulphur Dioxide

## Dietary Information

Key: **Suitable for**

  
Suitable for Vegetarian

  
May not be suitable for Vegan

  
May not be suitable for Kosher

  
May not be suitable for Halal

  
NO DATA for Coeliac

**Allergen Statement**  
For allergens see ingredients in bold. Made in a factory that handles nuts and peanut.

## Ingredients

skimmed **<b>milk</b>**, **<b>milk</b>** chocolate (25.8%) [sugar, cocoa butter, cocoa mass, whole **<b>milk</b>** powder, anhydrous **<b>milk</b>** fat, emulsifier (lecithins (contains **<b>soya</b>**)), Bourbon vanilla extract], salted caramel sauce (8.6%) [sugar, condensed **<b>milk</b>**, glucose syrup, water, butter (**<b>milk</b>**), natural vanilla flavouring, salt], sugar, caramel pieces (6.4%) [sugar, glucose syrup, butter (**<b>milk</b>**), whipping cream (**<b>milk</b>**), water], coconut oil, lactose (**<b>milk</b>**) and **<b>milk</b>** protein, glucose syrup, caramelised sugar syrup (sugar, water), emulsifier (mono- and diglycerides of fatty acids), stabilisers (locust bean gum, guar gum), natural flavouring, sea salt.