

The information on the [Erudus System](#) has been supplied by the manufacturers of the products and, whilst the owners of the Erudus System take steps to ensure the information is regularly updated, they give no warranty and no guarantee that the information is accurate. Product information and ingredients may change, please always read product labels carefully in addition to using the information provided by Erudus One.

We do not accept liability for any inaccuracies or incorrect information contained on this site. Please visit <http://www.erudus.com/terms-and-conditions> for full terms and conditions.

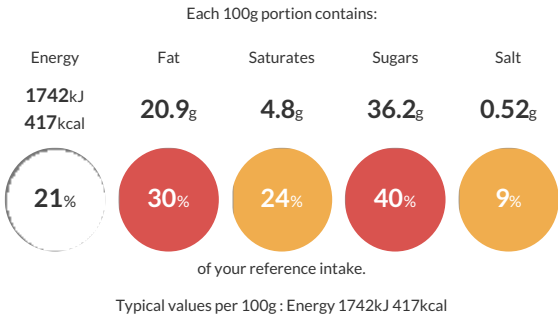
Raspberry Ripple Cake (Pre-cut 1x14)

Short Product Name:
Raspberry Ripple Cake

A light, traditional sponge baked with pink swirls, filled with buttercream and raspberry jam and hand finished with buttercream and raspberry ripple decoration.

Traded Unit GTIN: **5060082385698** Internal GTIN: Supplier: **Sussex Bakes Ltd T/A More Food** Suppliers Product Code: **WS276**

Reference Intake



Nutritional Information

Typical Values	Per 100g
Energy	1742kJ 417kCal
Carbohydrates	54.8g
of which sugars	36.2g
Fat	20.9g
of which saturates	4.8g
Fibre	0.8g
Protein	4.1g
Salt	0.52g

Allergy Information

Key: **Contains** **May Contain**


Contains
Cereal/Gluten


Contains
Milk


Contains
Eggs


Does Not
Contain
Peanuts


May Contain
Nuts


Does Not
Contain
Crustaceans


Does Not
Contain
Mustard


Does Not
Contain
Fish


Does Not
Contain
Lupin


Does Not
Contain
Sesame


Does Not
Contain
Celery


Does Not
Contain
Soya


Does Not
Contain
Molluscs


Does Not
Contain
Sulphur
Dioxide

Allergen Statement
May contain traces of nuts.

Ingredients

Sugar, Wheat Flour (**WHEAT** Flour, Calcium Carbonate, Iron, Niacin, Thiamin), Pasteurised Whole **EGG**, Rapeseed Oil, Water, Raspberry Jam (3.6%) (Glucose Syrup, Raspberry Puree, Gelling Agent (Pectin), Acidity Regulators (Citric Acid, Sodium Citrate)), Butter (**MILK**), Margarine (Palm Oil, Rapeseed Oil, Water, Emulsifier (Mono- and Diglycerides of Fatty Acids)), Humectant (Glycerol), **WHEAT** Starch, Raising Agents (Disodium Diphosphate, Sodium Carbonate, Potassium Hydrogen Carbonate), Whey Powder (**MILK**), Emulsifiers (Mono- and Diglycerides of Fatty Acids, Sodium Stearoyl Lactate), Modified Potato Starch, Colour (Carmines), **WHEAT** Gluten, Stabilisers (Sodium Carboxy Methyl Cellulose, Guar Gum), Salt.

Dietary Information

Key: **Suitable for**


May not be
suitable for
Vegetarian


May not be
suitable for
Vegan


May not be
suitable for
Kosher


May not be
suitable for
Halal


May not be
suitable for
Coeliac