

The information on the [Erudus System](#) has been supplied by the manufacturers of the products and, whilst the owners of the Erudus System take steps to ensure the information is regularly updated, they give no warranty and no guarantee that the information is accurate. Product information and ingredients may change, please always read product labels carefully in addition to using the information provided by Erudus One.

We do not accept liability for any inaccuracies or incorrect information contained on this site. Please visit <http://www.erudus.com/terms-and-conditions> for full terms and conditions.

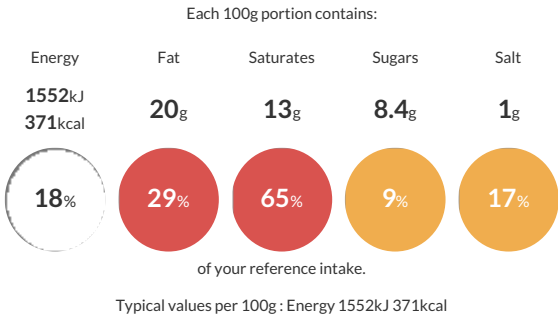
25 LEAVENED PUFF PASTRY SHEET 500G

Short Product Name:
CROISSANT SHEET

Raw frozen, ready to prove, fin butter leavened puff pastry sheets 500g

Traded Unit GTIN: 3419280028050 Internal GTIN: Supplier : Bridor Suppliers Product Code: 34813

Reference Intake



Nutritional Information

Typical Values	Per 100g
Energy	1552kJ 371kCal
Carbohydrates	39g
of which sugars	8.4g
Fat	20g
of which saturates	13g
Fibre	2g
Protein	7.8g
Salt	1g

Allergy Information

Key: Contains May Contain


Contains
Cereal/Gluten


Contains
Milk


May Contain
Eggs


Does Not
Contain
Peanuts


May Contain
Nuts


Does Not
Contain
Crustaceans


Does Not
Contain
Mustard


Does Not
Contain
Fish


Does Not
Contain
Lupin


May Contain
Sesame


Does Not
Contain
Celery


May Contain
Soya


Does Not
Contain
Molluscs


Does Not
Contain
Sulphur
Dioxide

Dietary Information

Key: Suitable for


Suitable for
Vegetarian


May not be
suitable for
Vegan


May not be
suitable for
Kosher


Suitable for
Halal


May not be
suitable for
Coeliac

Allergen Statement
For allergens, including cereals containing gluten, see ingredients in capital letters.
May contain traces of: sesame seeds, soya, nuts, eggs

Ingredients

WHEAT flour, fine BUTTER 23%, water, sugar, yeast, whole MILK powder, WHEAT gluten, salt, emulsifier (rape lecithin), flour treatment agents (ascorbic acid, alpha-amylases, hemicellulases).