

Supplier's Product Code :
Product Added :
Last Updated by Supplier :
erudus id :

70221
26 March 2025
26 March 2025
9683f98133ff42acaa318d50faedd2d



The information on the Erudus System has been supplied by the manufacturers of the products and, whilst the owners of the Erudus System take steps to ensure the information is regularly updated, they give no warranty and no guarantee that the information is accurate. Product information and ingredients may change, please always read product labels carefully in addition to using the information provided by Erudus One.

We do not accept liability for any inaccuracies or incorrect information contained on this site. Please visit <http://www.erudus.com/terms-and-conditions> for full terms and conditions.

Wholesome Farms Fresh British Whipping Cream

Short Product Name:

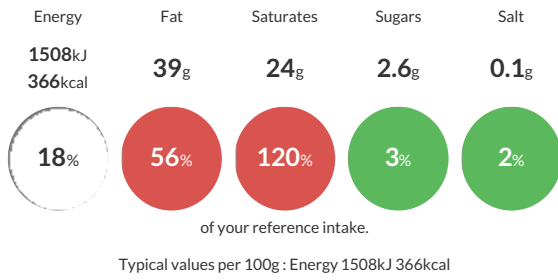
Fresh British Whipping Cream

Pasteurised Fresh Whipping Cream

Traded Unit GTIN: **5024333159582** Internal GTIN: Supplier: **Sysco GB Limited** Suppliers Product Code: **70221**

Reference Intake

Each 100g portion contains:



Nutritional Information

Typical Values	Per 100g
Energy	1508kJ 366kCal
Carbohydrates	2.6g
of which sugars	2.6g
Fat	39g
of which saturates	24g
Fibre	-g
Protein	1.9g
Salt	0.1g

Allergy Information

Key: **Contains** **May Contain**



Dietary Information

Key: **Suitable for**



Ingredients

Whipping Cream Milk