

Supplier's Product Code :
Product Added :
Last Updated by Supplier :
erudus id :

10000166
01 August 2024
01 August 2024
96b5cc0d698a466487a5d7227305580d



The information on the **Erudus System** has been supplied by the manufacturers of the products and, whilst the owners of the Erudus System take steps to ensure the information is regularly updated, they give no warranty and no guarantee that the information is accurate. Product information and ingredients may change, please always read product labels carefully in addition to using the information provided by Erudus One.

We do not accept liability for any inaccuracies or incorrect information contained on this site. Please visit <http://www.erudus.com/terms-and-conditions> for full terms and conditions.

Creme Brulee 12 x 1L

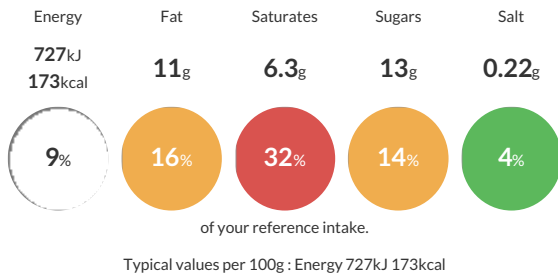
Short Product Name:
Creme Brulee

A heat treated blend of milk, butter, vegetable oil and egg. Heat then cool to produce a set dessert.

Traded Unit GTIN: **05017506119056** Internal GTIN: **5017506119254** Supplier: **Macphie Ltd** Suppliers Product Code: **10000166**

Reference Intake

Each 100g portion contains:



Nutritional Information

Typical Values	Per 100g
Energy	727kJ 173kCal
Carbohydrates	16g
of which sugars	13g
Fat	11g
of which saturates	6.3g
Fibre	0.08g
Protein	2.4g
Salt	0.22g

Allergy Information

Key: **Contains** **May Contain**



Gluten Claim

Gluten content is less than 20ppm.

Allergen Statement

Contains: **EGG** and **MILK**

Ingredients

Reconstituted Skimmed **MILK**, Water, Sugar, Vegetable Oil (Palm), Modified Starch, Butter(**MILK**), Reconstituted **EGG** Yolk, Stabiliser (Gellan gum), Flavouring, Emulsifier (Mono- and diglycerides of fatty acids (Palm)), Salt, Colour (Beta-Carotene)

Dietary Information

Key: **Suitable for**

