

The information on the [Erudus System](#) has been supplied by the manufacturers of the products and, whilst the owners of the Erudus System take steps to ensure the information is regularly updated, they give no warranty and no guarantee that the information is accurate. Product information and ingredients may change, please always read product labels carefully in addition to using the information provided by Erudus One.

We do not accept liability for any inaccuracies or incorrect information contained on this site. Please visit <http://www.erudus.com/terms-and-conditions> for full terms and conditions.

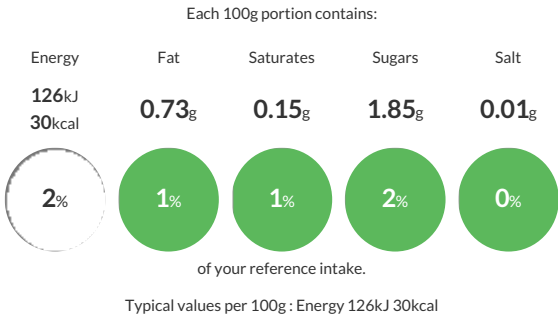
Chive Rings 6x60g

Short Product Name:
Chive Rings

Cleaned and cut leaves which have been air dried (Allium schoenoprasum)

Traded Unit GTIN: 5020933033697 Internal GTIN: 5020933028693 Supplier : Sleaford Quality Foods Suppliers Product Code : CHRI60V

Reference Intake



Nutritional Information

Typical Values	Per 100g
Energy	126kJ 30kCal
Carbohydrates	4.35g
of which sugars	1.85g
Fat	0.73g
of which saturates	0.15g
Fibre	2.5g
Protein	3.27g
Salt	0.01g

Allergy Information

Key: Contains May Contain


Does Not Contain Cereal/Gluten


Does Not Contain Milk


Does Not Contain Eggs


Does Not Contain Peanuts


Does Not Contain Nuts


Does Not Contain Crustaceans


Does Not Contain Mustard


Does Not Contain Fish


Does Not Contain Lupin


Does Not Contain Sesame


Does Not Contain Celery


Does Not Contain Soya


Does Not Contain Molluscs


Does Not Contain Sulphur Dioxide

Gluten Claim
Gluten content is less than 20ppm.

Ingredients

Chives.

Dietary Information

Key: Suitable for


Suitable for Vegetarian


Suitable for Vegan


Suitable for Kosher


Suitable for Halal


Suitable for Coeliac