

The information on the [Erudus System](#) has been supplied by the manufacturers of the products and, whilst the owners of the Erudus System take steps to ensure the information is regularly updated, they give no warranty and no guarantee that the information is accurate. Product information and ingredients may change, please always read product labels carefully in addition to using the information provided by Erudus One.

We do not accept liability for any inaccuracies or incorrect information contained on this site. Please visit <http://www.erudus.com/terms-and-conditions> for full terms and conditions.

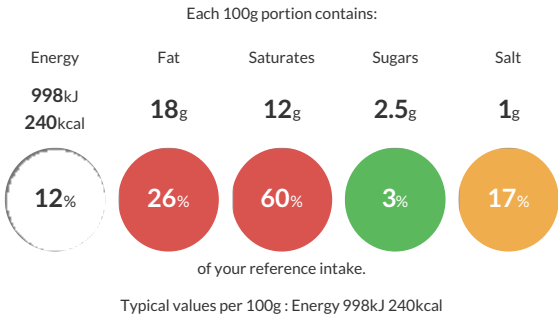
Param Paneer Cheese

Short Product Name:
Param Paneer

Medium fat soft cheese. Versatile cooking cheese.

Traded Unit GTIN: 15038961001363 Internal GTIN: 5038961001359 Supplier : Futura Foods UK Ltd Suppliers Product Code : 14292

Reference Intake



Nutritional Information

Typical Values	Per 100g
Energy	998kJ 240kCal
Carbohydrates	2.5g
of which sugars	2.5g
Fat	18g
of which saturates	12g
Fibre	-g
Protein	17g
Salt	1g

Allergy Information

Key: Contains May Contain


Does Not Contain Cereal/Gluten


Contains Milk


Does Not Contain Eggs


Does Not Contain Peanuts


Does Not Contain Nuts


Does Not Contain Crustaceans


Does Not Contain Mustard


Does Not Contain Fish


Does Not Contain Lupin


Does Not Contain Sesame


Does Not Contain Celery


Does Not Contain Soya


Does Not Contain Molluscs


Does Not Contain Sulphur Dioxide

Allergen Statement
Contains MILK.

Ingredients

Pasteurised Cow's **MILK**, Salt, Microbial Rennet, Citric Acid.

Dietary Information

Key: Suitable for


Suitable for Vegetarian


May not be suitable for Vegan


May not be suitable for Kosher


May not be suitable for Halal


NO DATA for Coeliac