

The information on the [Erudus System](#) has been supplied by the manufacturers of the products and, whilst the owners of the Erudus System take steps to ensure the information is regularly updated, they give no warranty and no guarantee that the information is accurate. Product information and ingredients may change, please always read product labels carefully in addition to using the information provided by Erudus One.

We do not accept liability for any inaccuracies or incorrect information contained on this site. Please visit <http://www.erudus.com/terms-and-conditions> for full terms and conditions.

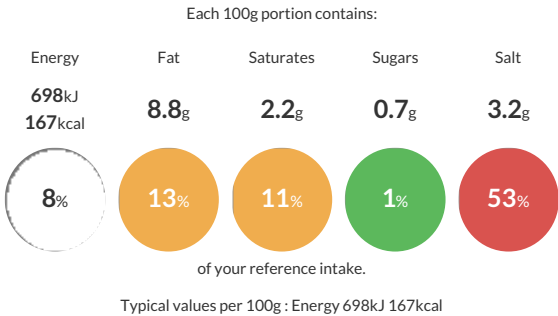
SSLO1C Smoked Salmon Long Slice Side 1kg

Short Product Name:
Smoked Salmon Long Slice Skin On 1kg

1 kg fixed weight, long sliced cold smoked farmed Atlantic salmon with skin, vacuum packed in a clear bag

Traded Unit GTIN:  Internal GTIN: Supplier : [Severn and Wye Smokery Ltd](#) Suppliers Product Code : [SSLO1C](#)

Reference Intake



Nutritional Information

| Typical Values | Per 100g |
|--------------------|------------------|
| Energy | 698kJ 167kCal |
| Carbohydrates | 5.2g |
| of which sugars | 0.7g |
| Fat | 8.8g |
| of which saturates | 2.2g |
| Fibre | <0.5g |
| Protein | 20.1g |
| Salt | 3.2g |

Allergy Information

Key: Contains May Contain

Gluten < 20ppm
Does Not Contain Cereal/Gluten

Does Not Contain Milk

Does Not Contain Eggs

Does Not Contain Peanuts

Does Not Contain Nuts

Does Not Contain Crustaceans

Does Not Contain Mustard

Contains Fish

Does Not Contain Lupin

Does Not Contain Sesame

Does Not Contain Celery

Does Not Contain Soya

Does Not Contain Molluscs

Does Not Contain Sulphur Dioxide

Gluten Claim
Gluten content is less than 20ppm.

Allergen Statement
Contains: Fish

Ingredients

Salmon (*Salmo salar*) (Fish) (96%), salt, sugar

Dietary Information

Key: Suitable for

NO DATA for Vegetarian

NO DATA for Vegan

Suitable for Kosher

Suitable for Halal

Suitable for Coeliac