

The information on the [Erudus System](#) has been supplied by the manufacturers of the products and, whilst the owners of the Erudus System take steps to ensure the information is regularly updated, they give no warranty and no guarantee that the information is accurate. Product information and ingredients may change, please always read product labels carefully in addition to using the information provided by Erudus One.

We do not accept liability for any inaccuracies or incorrect information contained on this site. Please visit <http://www.erudus.com/terms-and-conditions> for full terms and conditions.

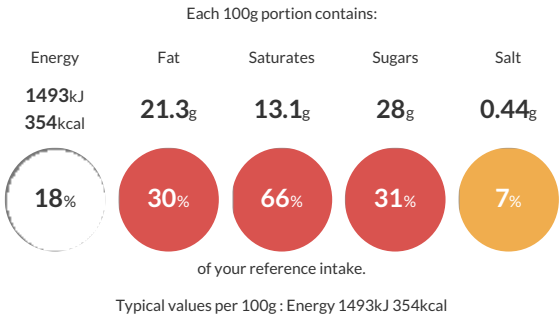
## Mini Black Forests (1 x 48)

Short Product Name:  
Mini Black Forests (1 x 48)

Rich chocolate sponge cakes topped with cream and sour cherry compote and sprinkles with chocolate shavings. (1 x 48)

Traded Unit GTIN: 5060089681472 Internal GTIN: Supplier : Central Foods Group Limited Suppliers Product Code : FDCAN53

### Reference Intake



### Nutritional Information


Typical Values	Per 100g
Energy	1493kJ 354kCal
Carbohydrates	38.7g
of which sugars	28g
Fat	21.3g
of which saturates	13.1g
Fibre	1.5g
Protein	4.3g
Salt	0.44g

### Allergy Information


Key: Contains May Contain

  
Contains Cereal/Gluten

  
Contains Milk

  
Contains Eggs


  
Does Not Contain Peanuts

  
Does Not Contain Nuts


  
Does Not Contain Crustaceans


  
Does Not Contain Mustard

  
Does Not Contain Fish


  
Does Not Contain Lupin

  
Does Not Contain Sesame

  
Does Not Contain Celery

  
Contains Soya

  
Does Not Contain Molluscs

  
Does Not Contain Sulphur Dioxide

### Dietary Information

Key: Suitable for

  
Suitable for Vegetarian

  
May not be suitable for Vegan

  
May not be suitable for Kosher

  
May not be suitable for Halal

  
NO DATA for Coeliac

### Ingredients

Sponge (Whole **EGG**, Butter (**MILK**), Caster Sugar, Fortified Self Raising Flour (**WHEAT** Flour (with Calcium, Iron, Niacin, Thiamin), Raising Agents (Sodium Carbonates, Calcium Phosphates)), Cocoa Powder), Cream Topping (Double Cream (14%) (**MILK**), Caster Sugar, Vanilla), Cherry Compote (Red Sour Cherries (13%), Granulated Sugar, Modified Maize Starch, Acidity Regulator (Citric Acid)), Dark Chocolate (2%) (Cocoa Mass, Sugar, Cocoa Butter, **SOYA** Lecithin, Natural Vanilla).