

The information on the [Erudus System](#) has been supplied by the manufacturers of the products and, whilst the owners of the Erudus System take steps to ensure the information is regularly updated, they give no warranty and no guarantee that the information is accurate. Product information and ingredients may change, please always read product labels carefully in addition to using the information provided by Erudus One.

We do not accept liability for any inaccuracies or incorrect information contained on this site. Please visit <http://www.erudus.com/terms-and-conditions> for full terms and conditions.

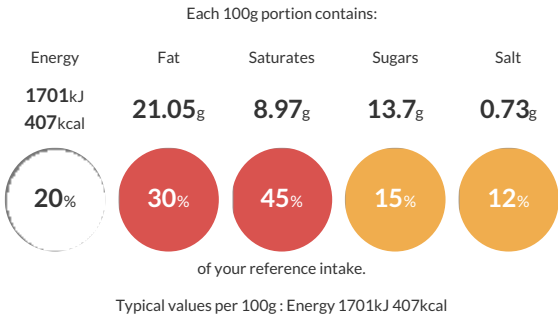
Almond Croissant

Short Product Name:
Almond Croissant

An unbaked, frozen, pre-proved croissant with almond filling, topped with flaked almonds.

Traded Unit GTIN: 05038910006756 Internal GTIN: Supplier: Lantmannen Unibake Suppliers Product Code: 210034.651639

Reference Intake



Nutritional Information

Typical Values	Per 100g
Energy	1701kJ 407kCal
Carbohydrates	43.85g
of which sugars	13.7g
Fat	21.05g
of which saturates	8.97g
Fibre	2.35g
Protein	9.3g
Salt	0.73g

Allergy Information

Key: Contains May Contain


Contains Cereal/Gluten


Contains Milk


Contains Eggs


Does Not Contain Peanuts


Contains Nuts


Does Not Contain Crustaceans


Does Not Contain Mustard


Does Not Contain Fish


Does Not Contain Lupin


Does Not Contain Sesame


Does Not Contain Celery


Does Not Contain Soya


Does Not Contain Molluscs


Does Not Contain Sulphur Dioxide

Dietary Information

Key: Suitable for


Suitable for Vegetarian


May not be suitable for Vegan


May not be suitable for Kosher


Suitable for Halal


May not be suitable for Coeliac

Allergen Statement
For allergens, including cereals containing gluten, see ingredients in capitals. May also contain traces of other nuts.

Ingredients

Dough: **WHEAT** Flour (contains: **WHEAT** Gluten), Water, Palm Fat, Yeast, Sugar, Butter (**MILK**), Coconut Oil, Rapeseed Oil, Salt, Baking Improver (**WHEAT** Gluten, **WHEAT** Flour, Flour Treatment Agent (Ascorbic Acid E300)), Emulsifier (Mono- and diglycerides of fatty acids E471), Acidity Regulator (Citric Acid E330), Flavouring, **EGG**, **ALMOND** Filling (19%) (Sugar, **ALMONDS** (6.5%), **EGG** White, Inverted Sugar Syrup, Water, **EGG** Yolk, Invertase E1103). Topping: **ALMOND** Flakes (4.2%). Inclusion: 1 x 65g Icing Sugar Pot (Icing Sugar, Potato Starch).