

The information on the [Erudus System](#) has been supplied by the manufacturers of the products and, whilst the owners of the Erudus System take steps to ensure the information is regularly updated, they give no warranty and no guarantee that the information is accurate. Product information and ingredients may change, please always read product labels carefully in addition to using the information provided by Erudus One.

We do not accept liability for any inaccuracies or incorrect information contained on this site. Please visit <http://www.erudus.com/terms-and-conditions> for full terms and conditions.

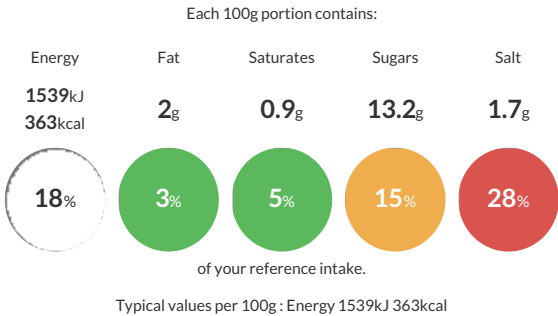
Waffle Mix

Short Product Name:
Waffle Mix

A dry pre-mix for producing a Golden-Brown Waffle with a slightly sweet vanilla taste.

Traded Unit GTIN: - Internal GTIN: 5028081000301 Supplier: Middleton Foods Suppliers Product Code: MA016

Reference Intake



Nutritional Information

Typical Values	Per 100g
Energy	1539kJ 363kCal
Carbohydrates	77g
of which sugars	13.2g
Fat	2g
of which saturates	0.9g
Fibre	-g
Protein	9.1g
Salt	1.7g

Allergy Information

Key: Contains May Contain


Contains
Cereal/Gluten


Contains
Milk


Contains
Eggs


Does Not
Contain
Peanuts


Does Not
Contain
Nuts


Does Not
Contain
Crustaceans


Does Not
Contain
Mustard


Does Not
Contain
Fish


Does Not
Contain
Lupin


Does Not
Contain
Sesame


Does Not
Contain
Celery


Contains
Soya


Does Not
Contain
Molluscs


Does Not
Contain
Sulphur
Dioxide

Dietary Information

Key: Suitable for


Suitable for
Vegetarian


May not be
suitable for
Vegan


May not be
suitable for
Kosher


May not be
suitable for
Halal


May not be
suitable for
Coeliac

Ingredients

WHEAT Flour (WHEAT, Calcium, Iron, Niacin, Thiamin), Maize Starch, Sugar, Butter MILK Powder, Buckwheat Flour, Raising Agents (E341(i), E500(ii)), Dried Whole EGG Powder, SOYA Flour, Salt, Flavouring.