

The information on the [Erudus System](#) has been supplied by the manufacturers of the products and, whilst the owners of the Erudus System take steps to ensure the information is regularly updated, they give no warranty and no guarantee that the information is accurate. Product information and ingredients may change, please always read product labels carefully in addition to using the information provided by Erudus One.

We do not accept liability for any inaccuracies or incorrect information contained on this site. Please visit <http://www.erudus.com/terms-and-conditions> for full terms and conditions.

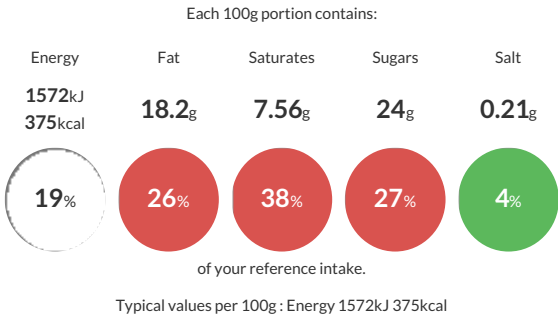
80525 Schulstad Mini Danish Selection - Mini Raspberry Crown

Short Product Name:  
Schulstad Mini Danish Selection

A selection of 5 Danish pastries: Mini Maple Pecan Plait, Mini Cinnamon Swirl, Mini Raspberry Crown, Mini Apple Coronet and Mini Vanilla Crown

Traded Unit GTIN: 05701536805255 Internal GTIN: Supplier: Lantmannen Unibake Suppliers Product Code: 80525

Reference Intake



Nutritional Information

Typical Values	Per 100g
Energy	1572kJ 375kCal
Carbohydrates	47.5g
of which sugars	24g
Fat	18.2g
of which saturates	7.56g
Fibre	1.6g
Protein	4.6g
Salt	0.21g

Allergy Information

Key: Contains May Contain

  
Contains Cereal/Gluten

  
May Contain Milk

  
Contains Eggs

  
Does Not Contain Peanuts

  
Contains Nuts

  
Does Not Contain Crustaceans

  
Does Not Contain Mustard

  
Does Not Contain Fish

  
Does Not Contain Lupin

  
Does Not Contain Sesame

  
Does Not Contain Celery

  
Does Not Contain Soya

  
Does Not Contain Molluscs

  
Does Not Contain Sulphur Dioxide

Dietary Information

Key: Suitable for

  
Suitable for Vegetarian

  
May not be suitable for Vegan

  
May not be suitable for Kosher

  
May not be suitable for Halal

  
NO DATA for Coeliac

**Allergen Statement**  
For allergens, including cereals containing gluten, see ingredients in **CAPITALS**. May also contain milk and other nuts.

Ingredients

**DOUGH:** WHEAT Flour (with Calcium, Iron, Niacin, Thiamin), Vegetable Margarine (Palm Oil, Rapeseed Oil, Water, Emulsifier (E471), Salt, Acidity Regulator (E330), Flavouring), Water, Yeast, Egg (EGG, Salt), Sugar, Improver (WHEAT Flour). **FILLING:** Raspberry & Strawberry Filling (28.0%) (Sugar, Raspberries, Water, Strawberry Puree, Maize Starch, Gelling Agent (E406), Elderberry Juice Concentrate, Flavouring, Acidity Regulator (E331iii), Preservative (E202)), Sugar, Vegetable Margarine (Palm Oil, Rapeseed Oil, Water, Coconut Oil, Salt, Emulsifier (E471), Acidity Regulator (E330), Flavouring), Water, WHEAT Flour, ALMOND Powder, Flavouring. **TOPPING:** Glaze (Water, Glazing Agent (E953), Sugar, Gelling Agent (E406), Acidity Regulator (E330), Preservative (E202)).  
Icing: Sugar, Water, Glucose Syrup.

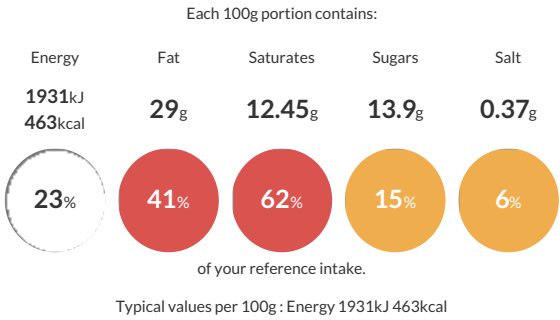
# 80525 Schulstad Mini Danish Selection - Mini Cinnamon Swirl

Short Product Name:  
Schulstad Mini Danish Selection

A selection of 5 Danish pastries: Mini Maple Pecan Plait, Mini Cinnamon Swirl, Mini Raspberry Crown, Mini Apple Coronet and Mini Vanilla Crown

Traded Unit GTIN: 05701536805255 Internal GTIN: Supplier : Lantmannen Unibake Suppliers Product Code : 80525

## Reference Intake



## Nutritional Information

Typical Values	Per 100g
Energy	1931kJ 463kCal
Carbohydrates	43.6g
of which sugars	13.9g
Fat	29g
of which saturates	12.45g
Fibre	1.4g
Protein	6.2g
Salt	0.37g

## Allergy Information

Key: Contains May Contain

## Dietary Information

Key: Suitable for

Allergen Statement  
For allergens, including cereals containing gluten, see ingredients in CAPITALS. May contain nuts.

## Ingredients

DOUGH: WHEAT Flour (with Calcium, Iron, Niacin, Thiamin), Vegetable Margarine (Palm Oil, Rapeseed Oil, Water, Emulsifier (E471), Salt, Acidity Regulator (E330), Flavouring), Water, Yeast, Egg (EGG, Salt), Sugar, Improver (WHEAT Flour). FILLING: Vegetable Margarine (Palm Oil, Rapeseed Oil, Water, Coconut Oil, Salt, Emulsifier (E471), Acidity Regulator (E330), Flavouring), Sugar, Water, Custard Powder (Sugar, Modified Potato Starch, Whey Powder (MILK), Skimmed MILK Powder, Coconut Oil, Stabilisers (E404, E450iii, E339ii, E451i), Glucose Syrup, Flavouring, Colour (E160aiii), Salt, MILK Protein), Sugar Syrup, Cinnamon (0.5%), WHEAT Flour , Cane Sugar Syrup. TOPPING: Glaze (Water, Glazing Agent (E953), Sugar, Gelling Agent (E406), Acidity Regulator (E330), Preservative (E202)).  
Icing: Sugar, Water, Glucose Syrup.

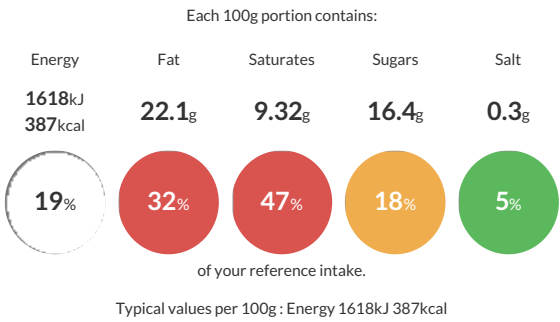
# 80525 Schulstad Mini Danish Selection - Mini Vanilla Crown

Short Product Name:  
Schulstad Mini Danish Selection

A selection of 5 Danish pastries: Mini Maple Pecan Plait, Mini Cinnamon Swirl, Mini Raspberry Crown, Mini Apple Coronet and Mini Vanilla Crown

Traded Unit GTIN: 05701536805255 Internal GTIN: Supplier : Lantmannen Unibake Suppliers Product Code : 80525

## Reference Intake



## Nutritional Information

Typical Values	Per 100g
Energy	1618kJ 387kCal
Carbohydrates	41.9g
of which sugars	16.4g
Fat	22.1g
of which saturates	9.32g
Fibre	1g
Protein	4.7g
Salt	0.3g

## Allergy Information

Key: Contains May Contain

Allergen Statement  
For allergens, including cereals containing gluten, see ingredients in CAPITALS. May also contain other nuts.

## Ingredients

**DOUGH:** WHEAT Flour (with Calcium, Iron, Niacin, Thiamin), Vegetable Margarine (Palm Oil, Rapeseed Oil, Water, Emulsifier (E471), Salt, Acidity Regulator (E330), Flavouring), Water, Yeast, Egg (EGG Salt), Sugar, Improver (WHEAT Flour). **FILLING:** Water, Custard Powder (6.5%), (Sugar, Modified Potato Starch, Whey Powder (MILK), Skimmed MILK Powder, Coconut Oil, Stabilisers (E404, E450iii, E339ii, E451i), Glucose Syrup, Flavouring, Salt, MILK Protein, Colour (E160aiii)), Sugar, Vegetable Margarine (Palm Oil, Rapeseed Oil, Water, Coconut Oil, Salt, Emulsifier (E471), Acidity Regulator (E330), Flavouring), WHEAT Flour, ALMOND Powder, Flavouring. **TOPPING:** Glaze (Water, Glazing Agent (E953), Sugar, Gelling Agent (E406), Acidity Regulator (E330), Preservative (E202)).  
Icing: Sugar, Water, Glucose Syrup.

## Dietary Information

Key: Suitable for

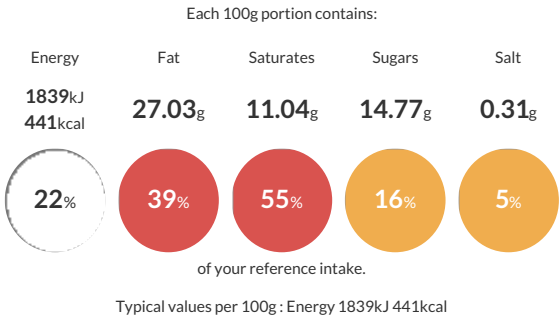
# 80525 Schulstad Mini Danish Selection - Mini Maple Pecan Plait

Short Product Name:  
Schulstad Mini Danish Selection

A selection of 5 Danish pastries: Mini Maple Pecan Plait, Mini Cinnamon Swirl, Mini Raspberry Crown, Mini Apple Coronet and Mini Vanilla Crown

Traded Unit GTIN: 05701536805255 Internal GTIN: Supplier : Lantmannen Unibake Suppliers Product Code : 80525

## Reference Intake



## Nutritional Information

Typical Values	Per 100g
Energy	1839kJ 441kCal
Carbohydrates	42.73g
of which sugars	14.77g
Fat	27.03g
of which saturates	11.04g
Fibre	2.07g
Protein	5.6g
Salt	0.31g

## Allergy Information

Key: Contains May Contain

Allergen Statement  
For allergens, including cereals containing gluten, see ingredients in CAPITALS. May also contain other nuts.

## Ingredients

**DOUGH:** WHEAT Flour (with Calcium, Iron, Niacin, Thiamin), Vegetable Margarine (Palm Oil, Rapeseed Oil, Water, Emulsifier (E471), Salt, Acidity Regulator (E330), Flavouring), Water, Yeast, Egg (EGG, Salt), Sugar, Improver (WHEAT Flour), Stabiliser (E417). **FILLING:** Sugar, Vegetable Margarine (Palm Oil, Rapeseed Oil, Water, Coconut Oil, Salt, Emulsifier (E471), Acidity Regulator (E330), Flavouring), Water, Maple Syrup (1%), Custard Powder (Sugar, Modified Potato Starch, Whey Powder (MILK), Skimmed MILK Powder, Coconut Oil, Stabilisers (E404, E450iii, E339ii, E451i), Glucose Syrup, Flavouring, Colour (E160aiii), Salt, MILK Protein), Tapioca Starch, WHEAT Flour, Cane Sugar Syrup, Thickeners (E401, E440i), Flavouring. **TOPPING:** Glaze (Water, Glazing Agent (E953), Sugar, Gelling Agent (E406), Acidity Regulator (E330), Preservative (E202)), PECAN NUTS (3.5%).

## Dietary Information

Key: Suitable for

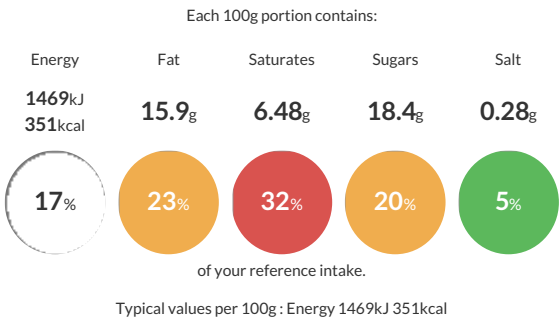
# 80525 Schulstad Mini Danish Selection - Mini Apple Coronet

Short Product Name:  
Schulstad Mini Danish Selection

A selection of 5 Danish pastries: Mini Maple Pecan Plait, Mini Cinnamon Swirl, Mini Raspberry Crown, Mini Apple Coronet and Mini Vanilla Crown

Traded Unit GTIN: 05701536805255 Internal GTIN: Supplier : Lantmannen Unibake Suppliers Product Code : 80525

## Reference Intake



## Nutritional Information

Typical Values	Per 100g
Energy	1469kJ 351kCal
Carbohydrates	46.07g
of which sugars	18.4g
Fat	15.9g
of which saturates	6.48g
Fibre	2.3g
Protein	4.67g
Salt	0.28g

## Allergy Information

Key: Contains May Contain

**Allergen Statement**  
For allergens, including cereals containing gluten, see ingredients in CAPITALS. May contain traces of nuts, milk.

## Ingredients

**DOUGH:** WHEAT Flour (with Calcium, Iron, Niacin, Thiamin), Vegetable Margarine (Palm Oil, Rapeseed Oil, Water, Emulsifier (E471), Salt, Acidity Regulator (E330), Flavouring), Water, Yeast, Egg (EGG, Salt), Sugar, Improver (WHEAT Flour), Stabiliser (E417). **FILLING:** Apple Filling (28%) (Apples, Sugar, Cornflour, Water, Flavouring, Preservative (E202)). **TOPPING:** Glaze (Water, Glazing Agent (E953), Sugar, Gelling Agent (E406), Acidity Regulator (E330), Preservative (E202)).  
Icing: Sugar, Water, Glucose Syrup.

## Dietary Information

Key: Suitable for