

The information on the [Erudus System](#) has been supplied by the manufacturers of the products and, whilst the owners of the Erudus System take steps to ensure the information is regularly updated, they give no warranty and no guarantee that the information is accurate. Product information and ingredients may change, please always read product labels carefully in addition to using the information provided by Erudus One.

We do not accept liability for any inaccuracies or incorrect information contained on this site. Please visit <http://www.erudus.com/terms-and-conditions> for full terms and conditions.

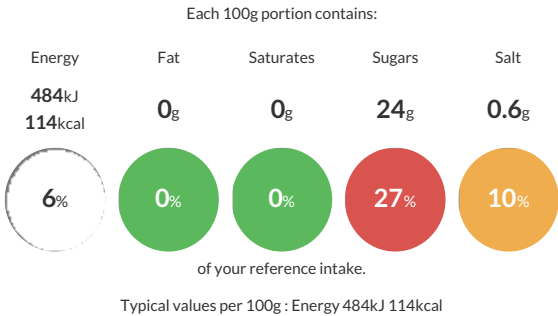
Beetroot Relish 2kg

Short Product Name:
Beetroot Relish

Crispy, refreshing shreds of beetroot in a syrupy sauce. Perfect with cold meats.

Traded Unit GTIN: - Internal GTIN: 5060092695374 Supplier : Stokes Sauces Suppliers Product Code : CTRCBE064/0002

Reference Intake




Nutritional Information

Typical Values	Per 100g
Energy	484kJ 114kCal
Carbohydrates	26g
of which sugars	24g
Fat	0g
of which saturates	0g
Fibre	1.9g
Protein	1.3g
Salt	0.6g

Allergy Information


Key: Contains May Contain



Gluten < 20ppm


Does Not Contain Cereal/Gluten



Does Not Contain Milk


Does Not Contain Eggs


Does Not Contain Peanuts


Does Not Contain Nuts


Does Not Contain Crustaceans


Does Not Contain Mustard


Does Not Contain Fish


Does Not Contain Lupin


Does Not Contain Sesame


Does Not Contain Celery


Does Not Contain Soya


Does Not Contain Molluscs


Contains Sulphur Dioxide

Gluten Claim
Gluten content is less than 20ppm.

Ingredients

Beetroot (55%), Unrefined Raw Cane Sugar (16%), Red Wine Vinegar, Red Wine (8%) (**SULPHITES**), Water, Cornflour, Sea Salt, Preservative: Sorbic Acid, Spice.

Dietary Information

Key: Suitable for


Suitable for Vegetarian


Suitable for Vegan


May not be suitable for Kosher


May not be suitable for Halal


Suitable for Coeliac