

The information on the [Erudus System](#) has been supplied by the manufacturers of the products and, whilst the owners of the Erudus System take steps to ensure the information is regularly updated, they give no warranty and no guarantee that the information is accurate. Product information and ingredients may change, please always read product labels carefully in addition to using the information provided by Erudus One.

We do not accept liability for any inaccuracies or incorrect information contained on this site. Please visit <http://www.erudus.com/terms-and-conditions> for full terms and conditions.

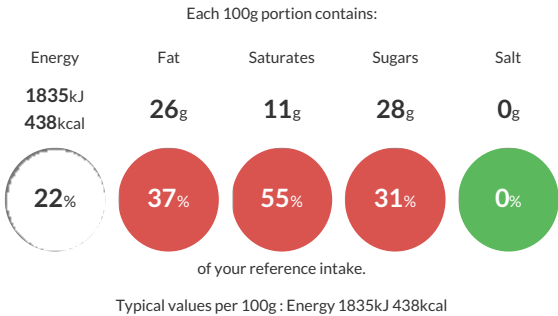
Benugo Bakewell Slice Traybake 60g

Short Product Name:
Bakewell Slice

Sponge cake containing almond pieces and raspberry jam.

Traded Unit GTIN:  Internal GTIN: Supplier : **Queensland Bakery Co. (Fulfil Ltd)** Suppliers Product Code : **9024-50**

Reference Intake



Nutritional Information

Typical Values	Per 100g
Energy	1835kJ 438kCal
Carbohydrates	48g
of which sugars	28g
Fat	26g
of which saturates	11g
Fibre	1.7g
Protein	4.2g
Salt	0g

Allergy Information

Key:  Contains  May Contain


Contains Cereal/Gluten


Contains Milk


Contains Eggs


Does Not Contain Peanuts


Contains Nuts


Does Not Contain Crustaceans


Does Not Contain Mustard


Does Not Contain Fish


Does Not Contain Lupin


Does Not Contain Sesame


Does Not Contain Celery


Does Not Contain Soya


Does Not Contain Molluscs


Does Not Contain Sulphur Dioxide

Dietary Information

Key:  Suitable for


Suitable for Vegetarian


May not be suitable for Vegan


May not be suitable for Kosher


May not be suitable for Halal


May not be suitable for Coeliac

Allergen Statement

Made in a factory that handles other nuts and may contain fruit stalks and/or stones.

Ingredients

Wheat Flour (**WHEAT**, Calcium Carbonate (E170), Iron, Niacin, Thiamine), Sugar, Butter (**MILK**), Water, Raspberry Conserve (10%) (Sugar, Raspberries, Gelling Agent (Citrus Pectin), Acidity Regulator (Sodium Citrate)), **ALMOND** (9%), Vegetable Oil (Rapeseed), Raising Agents (E450, E500), Whole **EGG** Powder.