

The information on the [Erudus System](#) has been supplied by the manufacturers of the products and, whilst the owners of the Erudus System take steps to ensure the information is regularly updated, they give no warranty and no guarantee that the information is accurate. Product information and ingredients may change, please always read product labels carefully in addition to using the information provided by Erudus One.

We do not accept liability for any inaccuracies or incorrect information contained on this site. Please visit <http://www.erudus.com/terms-and-conditions> for full terms and conditions.

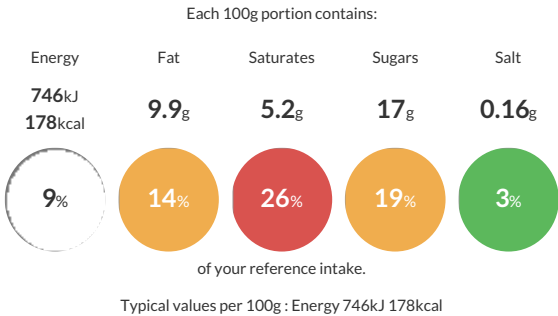
Ben & Jerry's Ice Cream Strawberry Cheesecake 100ml

Short Product Name:
Ben & Jerry's Ice Cream Strawberry Cheesecake 100ml

Strawberry cheesecake ice cream with sweetened strawberry pieces and a cookie swirl (9%)

Traded Unit GTIN: 8000920715154 Internal GTIN: 8711200859306 Supplier : Unilever UK Limited Suppliers Product Code : 69661877

Reference Intake



Nutritional Information


Typical Values	Per 100g
Energy	746kJ 178kCal
Carbohydrates	20g
of which sugars	17g
Fat	9.9g
of which saturates	5.2g
Fibre	-g
Protein	2.3g
Salt	0.16g

Allergy Information


Key: Contains May Contain


Contains Cereal/Gluten


Contains Milk


Contains Eggs



Does Not Contain Peanuts


Does Not Contain Nuts



Does Not Contain Crustaceans



Does Not Contain Mustard


Does Not Contain Fish



Does Not Contain Lupin


Does Not Contain Sesame


Does Not Contain Celery


Contains Soya


Does Not Contain Molluscs


Does Not Contain Sulphur Dioxide

Dietary Information

Key: Suitable for


Suitable for Vegetarian


NO DATA for Vegan


Suitable for Kosher


May not be suitable for Halal


NO DATA for Coeliac

Ingredients

Ingredients: cream (**MILK**) (24%), water, sugar, condensed skimmed **MILK**, strawberry puree (6%), strawberry pieces (5%), icing sugar, vegetable oils (fully refined soybean, rapeseed), free range **EGG** yolk, corn starch, **WHEAT** flour, wholemeal **WHEAT** flour, fresh cheese (**MILK**) (0.9%), **MILK** fat, stabilisers (pectin, guar gum, locust bean gum, carrageenan), lemon juice concentrate, salt, molasses, emulsifier (**SOYBEAN** lecithins), raising agent (sodium bicarbonate), honey, natural flavouring, elderberry juice concentrate, acidity regulator (lactic acid).