

Supplier's Product Code :
Product Added :
Last Updated by Supplier :
erudus id :

074202
12 April 2024
12 April 2024
a38aef9250e444b58474a076d4127689



The information on the **Erudus System** has been supplied by the manufacturers of the products and, whilst the owners of the Erudus System take steps to ensure the information is regularly updated, they give no warranty and no guarantee that the information is accurate. Product information and ingredients may change, please always read product labels carefully in addition to using the information provided by Erudus One.

We do not accept liability for any inaccuracies or incorrect information contained on this site. Please visit <http://www.erudus.com/terms-and-conditions> for full terms and conditions.

RED VELVET CAKE (1 x 14 ptn)

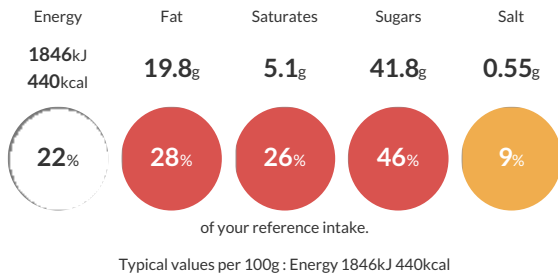
Short Product Name:
Red Velvet Cake

A red vanilla sponge with a hint of cocoa, topped with vanilla cream cheese icing and a sprinkling of the red sponge crumb.

Traded Unit GTIN: **5060044074202** Internal GTIN: Supplier: **The Handmade Cake Co.** Suppliers Product Code: **074202**

Reference Intake

Each 100g portion contains:



Nutritional Information

Typical Values	Per 100g
Energy	1846kJ 440kCal
Carbohydrates	59.9g
of which sugars	41.8g
Fat	19.8g
of which saturates	5.1g
Fibre	1.6g
Protein	4.5g
Salt	0.55g

Allergy Information

Key: **Contains** **May Contain**



Dietary Information

Key: **Suitable for**



Allergen Statement

For allergens, including cereals containing gluten, see ingredients in **BOLD**. This product may contain traces of nuts as it has been made in a bakery that uses nut ingredients.

Ingredients

Sponge [Sugar, **WHEAT** Flour (with Calcium Carbonate, Niacin, Iron, Thiamin), Pasteurised Free Range **EGG**, Rapeseed Oil, Concentrated Beetroot Juice, Water, Baking Powder [Raising Agents (E575, E500(ii), E336(i)), Maize Starch], Fat Reduced Cocoa Powder (1.4%), Skimmed **MILK** Powder, Colour (Paprika Extract), Vanilla Flavouring (0.1%), Vanilla Cream Cheese Icing (23%) [Sugar, Salted Butter [**MILK**], Salt], Full Fat Soft Cheese (7%) [Full Fat Soft Cheese [**MILK**], Thickener (Guar Gum), Vanilla Flavouring (0.6%)].