

The information on the [Erudus System](#) has been supplied by the manufacturers of the products and, whilst the owners of the Erudus System take steps to ensure the information is regularly updated, they give no warranty and no guarantee that the information is accurate. Product information and ingredients may change, please always read product labels carefully in addition to using the information provided by Erudus One.

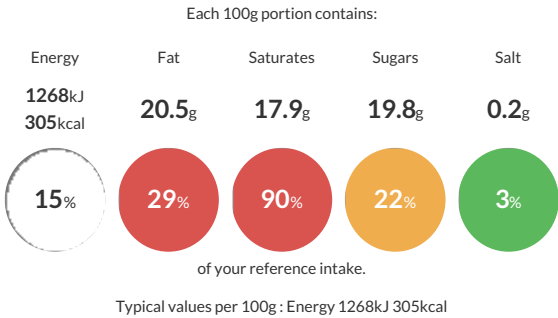
We do not accept liability for any inaccuracies or incorrect information contained on this site. Please visit <http://www.erudus.com/terms-and-conditions> for full terms and conditions.

Cheshire Creamery CC MChocIce_70ml 12x6

Vanilla flavour ice cream covered in a milk chocolate flavour coating

Traded Unit GTIN: 5010238020898 Internal GTIN: 5010238020881 Supplier : R&R Ice Cream UK Limited Suppliers Product Code : 31020584

Reference Intake



Nutritional Information

Typical Values	Per 100g
Energy	1268kJ 305kCal
Carbohydrates	26.4g
of which sugars	19.8g
Fat	20.5g
of which saturates	17.9g
Fibre	0.7g
Protein	2.8g
Salt	0.2g

Allergy Information

Key: Contains May Contain


Does Not Contain Cereal/Gluten


Contains Milk


Does Not Contain Eggs


Does Not Contain Peanuts


May Contain Nuts


Does Not Contain Crustaceans


Does Not Contain Mustard


Does Not Contain Fish


Does Not Contain Lupin


Does Not Contain Sesame


Does Not Contain Celery


Contains Soya


Does Not Contain Molluscs


Does Not Contain Sulphur Dioxide

Gluten Claim
Gluten content is less than 20ppm.

Ingredients

Partially reconstituted skimmed **MILK** concentrate, Milk chocolate flavour coating (28%) (Coconut oil, Sugar, Whey powder (from **MILK**), Fat-reduced cocoa powder, Emulsifier (**SOYA** lecithin)), Glucose syrup, Coconut oil, Sugar, Flavourings, Emulsifier (Mono- and diglycerides of fatty acids), Stabilisers (Locust bean gum, Guar gum), Colour (Carotene).