

The information on the [Erudus System](#) has been supplied by the manufacturers of the products and, whilst the owners of the Erudus System take steps to ensure the information is regularly updated, they give no warranty and no guarantee that the information is accurate. Product information and ingredients may change, please always read product labels carefully in addition to using the information provided by Erudus One.

We do not accept liability for any inaccuracies or incorrect information contained on this site. Please visit <http://www.erudus.com/terms-and-conditions> for full terms and conditions.

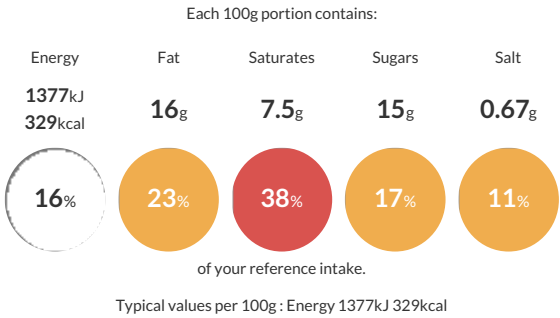
Mini Donuts filled with Berries

Short Product Name:
Mini beignets with filling 24% red fruits flavor

Mini Beignets filled with a red fruits filling.

Traded Unit GTIN: 03760008852151 Internal GTIN: 3760008852151 Supplier : Mademoiselle Desserts (Taunton) Suppliers Product Code : AD0708

Reference Intake



Nutritional Information

Typical Values	Per 100g
Energy	1377kJ 329kCal
Carbohydrates	39g
of which sugars	15g
Fat	16g
of which saturates	7.5g
Fibre	1.8g
Protein	6.3g
Salt	0.67g

Allergy Information

Key: Contains May Contain


Contains Cereal/Gluten


Contains Milk


Contains Eggs


Does Not Contain Peanuts


May Contain Nuts


Does Not Contain Crustaceans


Does Not Contain Mustard


Does Not Contain Fish


Does Not Contain Lupin


Does Not Contain Sesame


Does Not Contain Celery


May Contain Soya


Does Not Contain Molluscs


Does Not Contain Sulphur Dioxide

Dietary Information

Key: Suitable for


Suitable for Vegetarian


May not be suitable for Vegan


May not be suitable for Kosher


May not be suitable for Halal


NO DATA for Coeliac

Ingredients

WHEAT flour, water, vegetable fats (certified palm, rapeseed), sugar, raspberry puree 6%, BUTTER, EGG white, EGG, glucose-fructose syrup, dextrose, WHEAT gluten, blueberry puree 1.2%, blackberry puree 1.2%, modified starch, yeast, aroma, salt, emulsifier: E471, WHEAT starch, malted WHEAT flour, colour: E160a(iv), antioxidant: E300, preservative: E202.