

The information on the [Erudus System](#) has been supplied by the manufacturers of the products and, whilst the owners of the Erudus System take steps to ensure the information is regularly updated, they give no warranty and no guarantee that the information is accurate. Product information and ingredients may change, please always read product labels carefully in addition to using the information provided by Erudus One.

We do not accept liability for any inaccuracies or incorrect information contained on this site. Please visit <http://www.erudus.com/terms-and-conditions> for full terms and conditions.

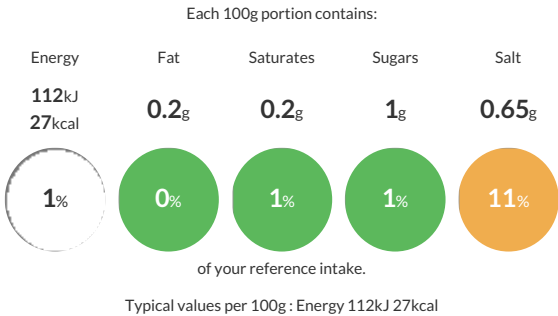
Riverdene Artichoke Hearts in Brine 12x390g

Short Product Name:
Artichoke Hearts in Brine

Riverdene Artichoke Hearts in Brine 5/7

Traded Unit GTIN: 15017482000536 Internal GTIN: 5017482000539 Supplier : Martin Mathew & Co Ltd Suppliers Product Code: A49812

Reference Intake



Nutritional Information

Typical Values	Per 100g
Energy	112kJ 27kCal
Carbohydrates	3.5g
of which sugars	1g
Fat	0.2g
of which saturates	0.2g
Fibre	2.5g
Protein	1.5g
Salt	0.65g

Allergy Information

Key: Contains May Contain


Does Not Contain Cereal/Gluten


Does Not Contain Milk


Does Not Contain Eggs


Does Not Contain Peanuts


Does Not Contain Nuts


Does Not Contain Crustaceans


Does Not Contain Mustard


Does Not Contain Fish


Does Not Contain Lupin


Does Not Contain Sesame


Does Not Contain Celery


Does Not Contain Soya


Does Not Contain Molluscs


Does Not Contain Sulphur Dioxide

Allergen Statement
no allergens present

Ingredients

Artichoke hearts, Water, Salt, Citric acid

Dietary Information

Key: Suitable for


Suitable for Vegetarian


Suitable for Vegan


Suitable for Kosher


Suitable for Halal


NO DATA for Coeliac