

Supplier's Product Code :
 Product Added :
 Last Updated by Supplier :
 erudus id :

07573
 09 April 2026
 09 April 2026
 a53e6dfb89a54038b9360b73e4df9be0



The information on the **Erudus System** has been supplied by the manufacturers of the products and, whilst the owners of the Erudus System take steps to ensure the information is regularly updated, they give no warranty and no guarantee that the information is accurate. Product information and ingredients may change, please always read product labels carefully in addition to using the information provided by Erudus One.

We do not accept liability for any inaccuracies or incorrect information contained on this site. Please visit <http://www.erudus.com/terms-and-conditions> for full terms and conditions.

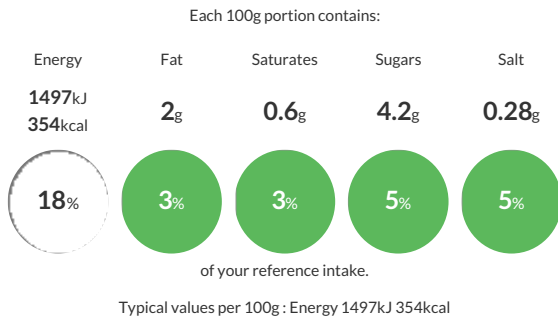
Weetabix Cereal Twin Portion 48 x 2 Pack B

Short Product Name:
 Weetabix Cereal

Whole wheat cereal with added vitamins and iron. 48 x 2 biscuit portions

Traded Unit GTIN: **5010029212433** Internal GTIN: Supplier: **Weetabix Ltd** Suppliers Product Code: **07573**

Reference Intake



Nutritional Information

Typical Values	Per 100g
Energy	1497kJ 354kCal
Carbohydrates	68g
of which sugars	4.2g
Fat	2g
of which saturates	0.6g
Fibre	10g
Protein	11g
Salt	0.28g

Allergy Information

Key: **Contains** **May Contain**



Allergen Statement

Allergy Advice. For allergens see ingredients in bold.

Ingredients

WHEAT (95%), Malted **BARLEY** Extract, Sugar, Salt, Niacin, Iron, Riboflavin (B2), Thiamin (B1), Folic Acid, Vitamin D

Dietary Information

Key: **Suitable for**

