

The information on the [Erudus System](#) has been supplied by the manufacturers of the products and, whilst the owners of the Erudus System take steps to ensure the information is regularly updated, they give no warranty and no guarantee that the information is accurate. Product information and ingredients may change, please always read product labels carefully in addition to using the information provided by Erudus One.

We do not accept liability for any inaccuracies or incorrect information contained on this site. Please visit <http://www.erudus.com/terms-and-conditions> for full terms and conditions.

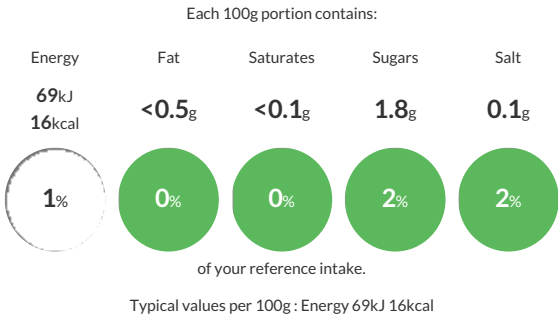
# Riverdene Chopped Tomatoes 12 x 800g

Short Product Name:  
Chopped Tomatoes

Canned chopped tomatoes in tomato juice

Traded Unit GTIN: 15017482001878 Internal GTIN: 5017482001871 Supplier : Martin Mathew & Co Ltd Suppliers Product Code: A25600

## Reference Intake



## Nutritional Information

Typical Values	Per 100g
Energy	69kJ 16kCal
Carbohydrates	3g
of which sugars	1.8g
Fat	<0.5g
of which saturates	<0.1g
Fibre	0.7g
Protein	1g
Salt	0.1g

## Allergy Information

Key: Contains May Contain

  
Does Not Contain Cereal/Gluten

  
Does Not Contain Milk

  
Does Not Contain Eggs

  
Does Not Contain Peanuts

  
Does Not Contain Nuts

  
Does Not Contain Crustaceans

  
Does Not Contain Mustard

  
Does Not Contain Fish

  
Does Not Contain Lupin

  
Does Not Contain Sesame

  
Does Not Contain Celery

  
Does Not Contain Soya

  
Does Not Contain Molluscs

  
Does Not Contain Sulphur Dioxide

## Dietary Information

Key: Suitable for

  
Suitable for Vegetarian

  
Suitable for Vegan

  
May not be suitable for Kosher

  
May not be suitable for Halal

  
NO DATA for Coeliac

## Ingredients

Tomatoes, Tomato juice concentrate, Citric acid.