

The information on the [Erudus System](#) has been supplied by the manufacturers of the products and, whilst the owners of the Erudus System take steps to ensure the information is regularly updated, they give no warranty and no guarantee that the information is accurate. Product information and ingredients may change, please always read product labels carefully in addition to using the information provided by Erudus One.

We do not accept liability for any inaccuracies or incorrect information contained on this site. Please visit <http://www.erudus.com/terms-and-conditions> for full terms and conditions.

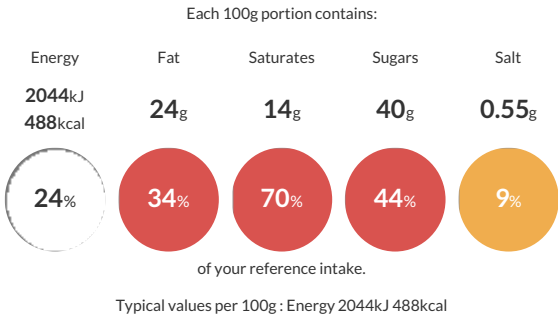
La Boulangerie Double Belgian Chocolate Chunk Cookies

Short Product Name:
Double Belgian Chocolate Chunk Cookies

A butter enriched, vanilla flavour cookie with chunks of dark & milk Belgian chocolate; 30 x 76g approximately

Traded Unit GTIN: **5024333179412** Internal GTIN: Supplier : **Sysco GB Limited** Suppliers Product Code : **34333**

Reference Intake



Nutritional Information

Typical Values	Per 100g
Energy	2044kJ 488kCal
Carbohydrates	61g
of which sugars	40g
Fat	24g
of which saturates	14g
Fibre	1.8g
Protein	5.1g
Salt	0.55g

Allergy Information

Key: **Contains** **May Contain**


Contains Cereal/Gluten


Contains Milk


Contains Eggs


Does Not Contain Peanuts


Does Not Contain Nuts


Does Not Contain Crustaceans


Does Not Contain Mustard


Does Not Contain Fish


Does Not Contain Lupin


Does Not Contain Sesame


Does Not Contain Celery


Contains Soya


Does Not Contain Molluscs


Does Not Contain Sulphur Dioxide

Dietary Information

Key: **Suitable for**


Suitable for Vegetarian


May not be suitable for Vegan


May not be suitable for Kosher


May not be suitable for Halal


NO DATA for Coeliac

Ingredients

WHEAT Flour(WHEAT Flour, Calcium Carbonate, Niacin, Iron, Thiamin), Dark Chocolate (16%)(Sugar, Cocoa Mass, Cocoa Butter, Whey Powder (MILK), Emulsifier(SOYA Lecithin), Flavouring), MILK Chocolate (16%)(Sugar, WholeMILK Powder, Cocoa Butter, Cocoa Mass, Emulsifier(SOYA Lecithin), Flavouring), Butter (MILK) (9%), Palm Oil, Rapeseed Oil, Invert Sugar Syrup, EGG Powder, Raising Agents(Sodium Hydrogen Carbonate, Disodium Diphosphate), Skimmed MILK Powder, Cane Molasses, Salt, Flavouring, Emulsifiers(Mono- and Diglycerides of Fatty Acids), Stabiliser(Xanthan Gum).