

Supplier's Product Code :
 Product Added :
 Last Updated by Supplier :
 erudus id :

ASUCH4
 15 January 2026
 15 January 2026
 a90205b8f66b40c9a1ae0a11b277ff46



The information on the **Erudus System** has been supplied by the manufacturers of the products and, whilst the owners of the Erudus System take steps to ensure the information is regularly updated, they give no warranty and no guarantee that the information is accurate. Product information and ingredients may change, please always read product labels carefully in addition to using the information provided by Erudus One.

We do not accept liability for any inaccuracies or incorrect information contained on this site. Please visit <http://www.erudus.com/terms-and-conditions> for full terms and conditions.

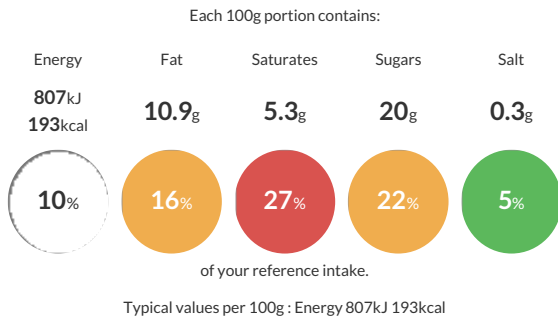
Summertime Chocolate Ice Cream 4 litre

Short Product Name:
 Chocolate Ice Cream

Soft Scoop Chocolate Flavour Ice Cream

Traded Unit GTIN: **15010603000552** Internal GTIN: **5010603000555** Supplier: **Suncream Dairies Ltd** Suppliers Product Code: **ASUCH4**

Reference Intake



Nutritional Information

| Typical Values | Per 100g |
|--------------------|------------------|
| Energy | 807kJ 193kCal |
| Carbohydrates | 20.3g |
| of which sugars | 20g |
| Fat | 10.9g |
| of which saturates | 5.3g |
| Fibre | 0.7g |
| Protein | 3.2g |
| Salt | 0.3g |

Allergy Information

Key: **Contains** **May Contain**

| | | | | | | |
|--------------------------------|------------------------|-------------------------|--------------------------|-----------------------|------------------------------|----------------------------------|
| Does Not Contain Cereal/Gluten | Contains Milk | Does Not Contain Eggs | Does Not Contain Peanuts | Does Not Contain Nuts | Does Not Contain Crustaceans | Does Not Contain Mustard |
| Does Not Contain Fish | Does Not Contain Lupin | Does Not Contain Sesame | Does Not Contain Celery | Does Not Contain Soya | Does Not Contain Molluscs | Does Not Contain Sulphur Dioxide |

Dietary Information

Key: **Suitable for**

| | | | | |
|-------------------------|-------------------|--------------------------------|-------------------------------|---------------------|
| Suitable for Vegetarian | NO DATA for Vegan | May not be suitable for Kosher | May not be suitable for Halal | NO DATA for Coeliac |
|-------------------------|-------------------|--------------------------------|-------------------------------|---------------------|

Ingredients

Water, Sugar, Palm Oil, Buttermilk Powder (MILK), Whey Powder (MILK), Dextrose, Fat Reduced Cocoa Powder (1.5%) Skimmed MILK Powder (MILK), Emulsifier (Mono- and Di-Glycerides of Fatty Acids), Stabilisers (Cellulose Gum, Guar Gum, Locust Bean Gum).