

The information on the [Erudus System](#) has been supplied by the manufacturers of the products and, whilst the owners of the Erudus System take steps to ensure the information is regularly updated, they give no warranty and no guarantee that the information is accurate. Product information and ingredients may change, please always read product labels carefully in addition to using the information provided by Erudus One.

We do not accept liability for any inaccuracies or incorrect information contained on this site. Please visit <http://www.erudus.com/terms-and-conditions> for full terms and conditions.

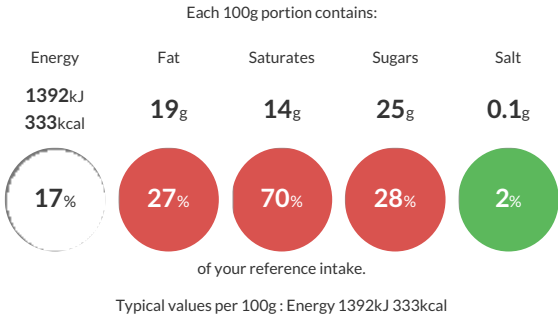
Oreo OREO BTC 20x110ml UK AR

Short Product Name:

Chocolate flavour biscuit cone (13%) with chocolate flavour coating (8.5%) filled with vanilla flavour ice cream with crushed cookie pieces (4.3%) and topped with crushed chocolate flavour cookie piec

Traded Unit GTIN: **8606018614530** Internal GTIN: **8606018614523** Supplier : **R&R Ice Cream UK Limited** Suppliers Product Code : **31017792**

Reference Intake



Nutritional Information

Typical Values	Per 100g
Energy	1392kJ 333kCal
Carbohydrates	37g
of which sugars	25g
Fat	19g
of which saturates	14g
Fibre	1.5g
Protein	0.3g
Salt	0.1g

Allergy Information

Key: **Contains** **May Contain**

Dietary Information

Key: **Suitable for**

Ingredients

Ingredients: Reconstituted skimmed MILK, sugar, vegetable oils (coconut, palm, sunflower), crushed chocolate flavour cookie pieces with vanilla flavour filling (11%) (WHEAT flour, sugar, palm oil, rapeseed oil, fat reduced cocoa powder, WHEAT starch, glucose-fructose syrup, raising agents (potassium, ammonium and, sodium carbonates), salt, emulsifier (SOYA lecithin), acidity regulator (sodium hydroxide), flavouring), water, WHEAT flour, glucose syrup, fat reduced cocoa powder (2.5%), dried whey (from MILK), coconut oil, emulsifiers (SOYA and sunflower lecithin, E471, E475), dried skimmed MILK, stabilisers (E410, E412), colour (carbon black), salt, flavouring.