

The information on the [Erudus System](#) has been supplied by the manufacturers of the products and, whilst the owners of the Erudus System take steps to ensure the information is regularly updated, they give no warranty and no guarantee that the information is accurate. Product information and ingredients may change, please always read product labels carefully in addition to using the information provided by Erudus One.

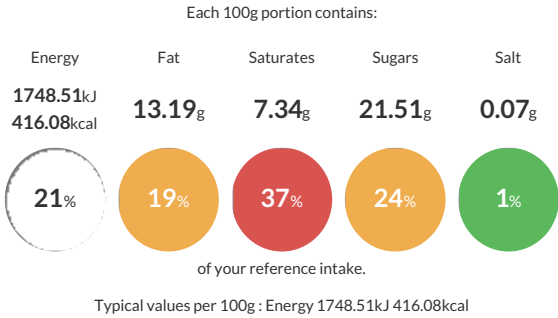
We do not accept liability for any inaccuracies or incorrect information contained on this site. Please visit <http://www.erudus.com/terms-and-conditions> for full terms and conditions.

KFF Cranberry and Pineapple

Short Product Name:  
A mix of cereals with dried fruits and seeds

Traded Unit GTIN:  Internal GTIN: Supplier : [Alara Wholefoods Ltd](#) Suppliers Product Code : [20214141](#)

Reference Intake



Nutritional Information

Typical Values	Per 100g
Energy	1748.51kJ 416.08kCal
Carbohydrates	63.71g
of which sugars	21.51g
Fat	13.19g
of which saturates	7.34g
Fibre	6.71g
Protein	7.27g
Salt	0.07g

Allergy Information

Key: Contains May Contain

  
Contains Cereal/Gluten

  
May Contain Milk

  
Does Not Contain Eggs

  
May Contain Peanuts

  
May Contain Nuts

  
Does Not Contain Crustaceans

  
Does Not Contain Mustard

  
Does Not Contain Fish

  
Does Not Contain Lupin

  
May Contain Sesame

  
Does Not Contain Celery

  
May Contain Soya

  
Does Not Contain Molluscs

  
Contains Sulphur Dioxide

**Allergen Statement**  
Packed in a factory that handles cereals containing gluten, milk, peanuts, nuts, sesame, soya and Sulphur dioxide.

Ingredients

Honey Oats Type B [Wholegrain **OATFLAKES** (81%), Honey (9%), Palm Oil] (41.24%), Malted Wheat Flakes 20.62% [**WHEAT** (99.5%), Malt (**BARLEY**) (0.5%)], Raisins Flame [Raisins Flame, sunflower oil] (10.31%), Pineapple Dice [Pineapple, Sugar, Citric acid (E330), **SULPHUR DIOXIDE** (E220)] (10.31%), Coconut **CHIPS** Toasted (10.31%), Cranberries Sliced d [Cranberries, Canned Sugar, Sunflower Oil ] (5.15%), Pumpkin Seeds Org. (2.06%)

Dietary Information

Key: Suitable for

  
Suitable for Vegetarian

  
May not be suitable for Vegan

  
May not be suitable for Kosher

  
May not be suitable for Halal

  
May not be suitable for Coeliac