

The information on the [Erudus System](#) has been supplied by the manufacturers of the products and, whilst the owners of the Erudus System take steps to ensure the information is regularly updated, they give no warranty and no guarantee that the information is accurate. Product information and ingredients may change, please always read product labels carefully in addition to using the information provided by Erudus One.

We do not accept liability for any inaccuracies or incorrect information contained on this site. Please visit <http://www.erudus.com/terms-and-conditions> for full terms and conditions.

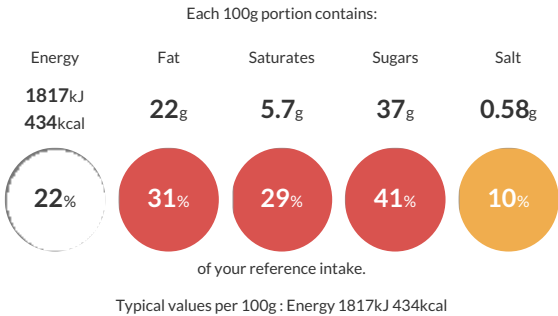
Coronation Cupcakes x20 - Chocolate-Vanilla Cupcake with Coronation Topper

Short Product Name:
Coronation Cupcakes

A mixed box of - x10 Coronation Vanilla Cupcake with Coronation Topper (CPVANILC) - x10 Coronation Chocolate-Vanilla Cupcake with Coronation Topper (CPCHVANILC)

Traded Unit GTIN: 5060158957927 Internal GTIN: 5060158957958 Supplier : Love Handmade Cakes (Exquisite Handmade Cakes) Suppliers Product Code : CPCCCORF

Reference Intake



Nutritional Information

Typical Values	Per 100g
Energy	1817kJ 434kCal
Carbohydrates	53g
of which sugars	37g
Fat	22g
of which saturates	5.7g
Fibre	-g
Protein	4.2g
Salt	0.58g

Allergy Information

Key: Contains May Contain


Contains Cereal/Gluten


Contains Milk


Contains Eggs


May Contain Peanuts


May Contain Nuts


Does Not Contain Crustaceans


Does Not Contain Mustard


Does Not Contain Fish


Does Not Contain Lupin


Does Not Contain Sesame


Does Not Contain Celery


May Contain Soya


Does Not Contain Molluscs


Does Not Contain Sulphur Dioxide

Dietary Information

Key: Suitable for


Suitable for Vegetarian


May not be suitable for Vegan


May not be suitable for Kosher


May not be suitable for Halal


May not be suitable for Coeliac

Allergen Statement
For allergens, including cereals containing gluten, see ingredients in **BOLD**. May contain peanuts, nuts, soya and other gluten containing cereals. Wafer topper contains sweetener. *May have an adverse effect on activity and attention in children.

Ingredients

Vanilla Flavour Icing (30%) (Sugar, Vegetable Oils (Palm, Rapeseed), Water, Humectant (Glycerol), Skimmed **MILK** Powder, Natural Flavouring, Emulsifier (E435), Preservative (E202), Acidity Regulator (E339)), Sugar, Wheat Flour (**WHEAT** Flour, Calcium Carbonate, Iron, Niacin, Thiamine), Pasteurised Liquid Whole **EGG**, Rapeseed Oil, Humectant (Vegetable Glycerine), Modified Maize Starch, Fat Reduced Cocoa Powder (1%), Whey Powder (**MILK**), Edible Wafer Topper With Sweetener (Potato Starch, Water, Olive Oil, Maltodextrin, Flavouring, Sweetener (Sucralose), Colours (*E102, *E110, *E122, E133, E151)), Raising Agents (E500, E450), Preservative (E202), Salt, Natural Flavouring.

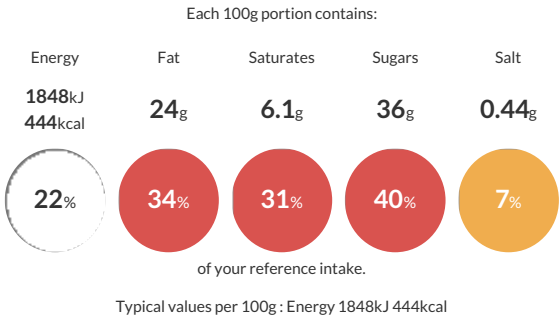
Coronation Cupcakes x20 - Chocolate-Vanilla Cupcake with Coronation Topper

Short Product Name:
Coronation Cupcakes

A mixed box of - x10 Coronation Vanilla Cupcake with Coronation Topper (CPVANILC) - x10 Coronation Chocolate-Vanilla Cupcake with Coronation Topper (CPCHVANILC)

Traded Unit GTIN: 5060158957927 Internal GTIN: 5060158957958 Supplier : Love Handmade Cakes (Exquisite Handmade Cakes) Suppliers Product Code : CPCCCORF

Reference Intake



Nutritional Information

Typical Values	Per 100g
Energy	1848kJ 444kCal
Carbohydrates	52g
of which sugars	36g
Fat	24g
of which saturates	6.1g
Fibre	-g
Protein	3.7g
Salt	0.44g

Allergy Information

Key: Contains May Contain

Allergen Statement
For allergens, including cereals containing gluten, see ingredients in **BOLD**. May contain peanuts, nuts, soya and other gluten containing cereals. Wafer topper contains sweetener. *May have an adverse effect on activity and attention in children.

Ingredients

Vanilla Flavour Icing (30%) (Sugar, Vegetable Oils (Palm, Rapeseed), Water, Humectant (Glycerol), Skimmed **MILK** Powder, Natural Flavouring, Emulsifier (E435), Preservative (E202), Acidity Regulator (E339)), Sugar, Wheat Flour (**WHEAT** Flour, Calcium Carbonate, Iron, Niacin, Thiamine), Pasteurised Liquid Whole **EGG**, Rapeseed Oil, Humectant (Vegetable Glycerine), Modified Maize Starch, Whey Powder (**MILK**), Edible Wafer Topper With Sweetener (Potato Starch, Water, Olive Oil, Maltodextrin, Flavouring, Sweetener (Sucralose), Colours (*E102, *E110, *E122, E133, E151)), Raising Agents (E450, E500, E341), Emulsifiers (E477, E471, E481), Preservative (E202), **WHEAT** Gluten, Natural Flavouring, Vanilla Flavouring (Flavouring, Colour (E150d)).

Dietary Information

Key: Suitable for