

Supplier's Product Code :  
Product Added :  
Last Updated by Supplier :  
erudus id :

FBC0275  
17 January 2024  
17 January 2024  
af0ecb67cca84af094f0e4ebfc3a6d12



The information on the **Erudus System** has been supplied by the manufacturers of the products and, whilst the owners of the Erudus System take steps to ensure the information is regularly updated, they give no warranty and no guarantee that the information is accurate. Product information and ingredients may change, please always read product labels carefully in addition to using the information provided by Erudus One.

We do not accept liability for any inaccuracies or incorrect information contained on this site. Please visit <http://www.erudus.com/terms-and-conditions> for full terms and conditions.

## Besure (12.5kg)

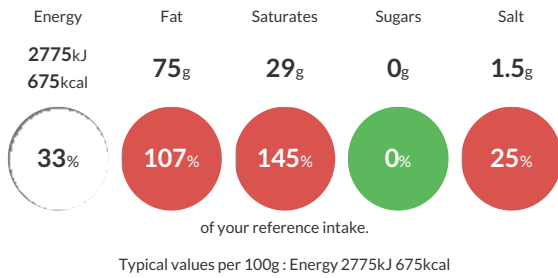
Short Product Name:  
Besure (12.5kg)

A VERY HIGH QUALITY cooking and baking Vegetable Fat 75%. Suitable for VEGETARIANS. It is also GLUTEN FREE. Besure has just the right balance of fat and other ingredients to make light and fluffy cakes, perfectly risen muffins, melt in the mouth pastries, beautiful biscuits and many other delicious bakes. ESPECIALLY EFFECTIVE in tarts, scones, cakes, and bread use. Product size 12.5kg bag in box.

Traded Unit GTIN: **05011044000401** Internal GTIN: **05011044000401** Supplier : **JDS Foods** Suppliers Product Code : **FBC0275**

### Reference Intake

Each 100g portion contains:



### Nutritional Information

Typical Values	Per 100g
Energy	2775kJ 675kCal
Carbohydrates	0g
of which sugars	0g
Fat	75g
of which saturates	29g
Fibre	0g
Protein	0g
Salt	1.5g

### Allergy Information

Key: **Contains** **May Contain**



#### Allergen Statement

For allergens, see ingredients in bold.

### Ingredients

Vegetable Oils in varying proportions (Palm Oil, Rapeseed Oil), Water, Salt, Emulsifiers (Mono & Diglycerides of Fatty Acids, Polyoxyethylene Sorbitan Monostearate), Acidity Regulator (Citric Acid), Vitamin E, Flavouring (**MILK**), Colour (Beta Carotene).

### Dietary Information

Key: **Suitable for**

