

The information on the [Erudus System](#) has been supplied by the manufacturers of the products and, whilst the owners of the Erudus System take steps to ensure the information is regularly updated, they give no warranty and no guarantee that the information is accurate. Product information and ingredients may change, please always read product labels carefully in addition to using the information provided by Erudus One.

We do not accept liability for any inaccuracies or incorrect information contained on this site. Please visit <http://www.erudus.com/terms-and-conditions> for full terms and conditions.

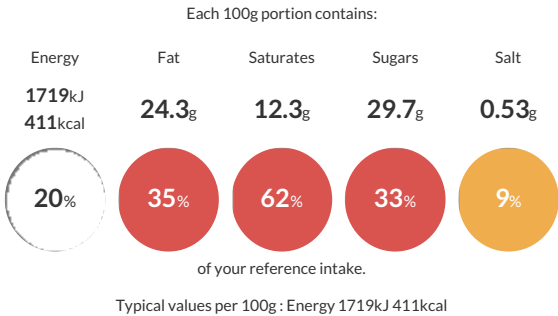
## Honeycomb Golden Nugget Cheesecake 9" - 14 Cut

Short Product Name:  
Honeycomb Golden Nugget Cheesecake

The "original" recipe ! On a crunchy biscuit base ,our intensely rich vanilla cheesecake filled and topped with a mixture of crunchy chocolate coated and uncoated honeycomb pieces.

Traded Unit GTIN: **5029872016761** Internal GTIN: **5029872007738** Supplier : **The English Cheesecake Company** Suppliers Product Code : **N327MAS**

### Reference Intake



### Nutritional Information

Typical Values	Per 100g
Energy	1719kJ 411kCal
Carbohydrates	43.7g
of which sugars	29.7g
Fat	24.3g
of which saturates	12.3g
Fibre	0.7g
Protein	4.2g
Salt	0.53g

### Allergy Information

Key: **Contains** **May Contain**

  
Contains Cereal/Gluten

  
Contains Milk

  
May Contain Eggs

  
Does Not Contain Peanuts

  
May Contain Nuts

  
Does Not Contain Crustaceans

  
Does Not Contain Mustard

  
Does Not Contain Fish

  
Does Not Contain Lupin

  
Does Not Contain Sesame

  
Does Not Contain Celery

  
Contains Soya

  
Does Not Contain Molluscs

  
May Contain Sulphur Dioxide

### Dietary Information

Key: **Suitable for**

  
Suitable for Vegetarian

  
May not be suitable for Vegan

  
May not be suitable for Kosher

  
May not be suitable for Halal

  
NO DATA for Coeliac

### Ingredients

Biscuit Base (25%) [Fortified **WHEAT** Flour (**WHEAT** Flour, Calcium Carbonate, Iron, Thiamin, Niacin), Vegetable Oils (SG **RSPO** Palm, Rapeseed), Sugar, Invert Sugar Syrup, Raising Agents; Sodium Carbonates, Ammonium Carbonates; Salt], Double Cream (**MILK**), Reduced Fat Soft Cheese (**MILK**) (15%) [Skimmed **MILK**, Cream (**MILK**), Permeate, Salt, Tapioca Starch, Thickener; (Xanthan Gum, Locust Bean Gum), Bacterial Starter Culture], Milk Chocolate Honeycomb (19%) [Sugar, Cocoa Butter, Cocoa Mass, Skimmed **MILK** Powder, **MILK** Sugar, Whey Powder (**MILK**), Anhydrous **MILK** Fat, Emulsifier: **SOYA** Lecithin, Glucose Syrup, Water, Raising Agent: Sodium Bicarbonate, Glazing Agent: Gum Arabic (E414), Sucrose, Honey], Sugar, Full Fat Soft Cheese (**MILK**) (5%), Honeycomb Granules (2%) [Sugar, Glucose Syrup, Water, Raising Agent: Sodium Bicarbonate, Non-Hydrogenated Vegetable Fat SG (Shea Oil, Palm Oil, Emulsifier: **SOYA** Lecithin)], Starch, Partially Inverted Sugar Syrup, **MILK**, Tapioca Starch, Natural Vanilla Flavouring, Preservative: Potassium Sorbate