

Supplier's Product Code :
Product Added :
Last Updated by Supplier :
erudus id :

29181
26 April 2024
26 April 2024
af46d3e5a65c4b8e927af2097c1a0fe2



The information on the **Erudus System** has been supplied by the manufacturers of the products and, whilst the owners of the Erudus System take steps to ensure the information is regularly updated, they give no warranty and no guarantee that the information is accurate. Product information and ingredients may change, please always read product labels carefully in addition to using the information provided by Erudus One.

We do not accept liability for any inaccuracies or incorrect information contained on this site. Please visit <http://www.erudus.com/terms-and-conditions> for full terms and conditions.

Sysco Classic Sliced Corned Beef

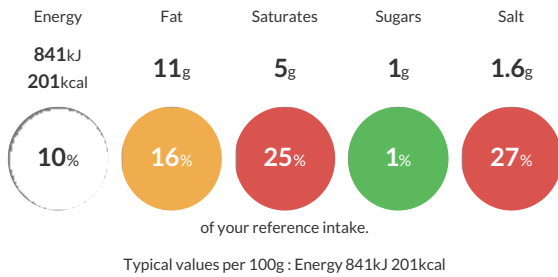
Short Product Name:
Sliced Corned Beef

Cured & cooked slices of beef

Traded Unit GTIN: **15024333103926** Internal GTIN: **5024333103929** Supplier: **Brake Bros Ltd** Suppliers Product Code: **29181**

Reference Intake

Each 100g portion contains:



Nutritional Information

Typical Values	Per 100g
Energy	841kJ 201kCal
Carbohydrates	1g
of which sugars	1g
Fat	11g
of which saturates	5g
Fibre	0g
Protein	25g
Salt	1.6g

Allergy Information

Key: **Contains** **May Contain**



Dietary Information

Key: **Suitable for**



Ingredients

Beef (120%), Salt, Sugar, Preservative(Sodium Nitrite).