

Supplier's Product Code :
Product Added :
Last Updated by Supplier :
erudus id :

291006
21 January 2026
21 January 2026
aff8ba7dd99c441483cec518234746e6



The information on the Erudus System has been supplied by the manufacturers of the products and, whilst the owners of the Erudus System take steps to ensure the information is regularly updated, they give no warranty and no guarantee that the information is accurate. Product information and ingredients may change, please always read product labels carefully in addition to using the information provided by Erudus One.

We do not accept liability for any inaccuracies or incorrect information contained on this site. Please visit <http://www.erudus.com/terms-and-conditions> for full terms and conditions.

POPPI STRAWBERRY AND LEMON 330ML CAN X24

Short Product Name:

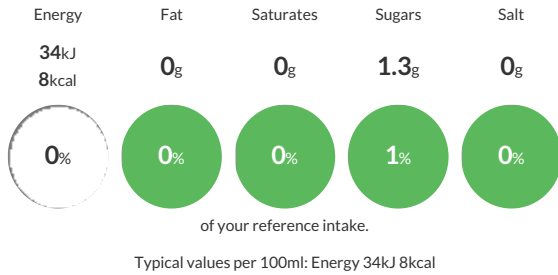
Carbonated Low Calorie Strawberry and Lemon Flavour Soft Drink with Added Fibre, with Sugar and Sweetener.

Carbonated soft drink

Traded Unit GTIN: 04062139027606 Internal GTIN: 4062139027613 Supplier: Britvic Soft Drinks Limited Suppliers Product Code: 291006

Reference Intake

Each 100ml portion contains:



Nutritional Information

Typical Values	Per 100ml
Energy	34kJ 8kCal
Carbohydrates	1.6g
of which sugars	1.3g
Fat	0g
of which saturates	0g
Fibre	0.9g
Protein	0g
Salt	0g

Allergy Information

Key: Contains May Contain



Dietary Information

Key: Suitable for



Ingredients

Carbonated Water, Cassava Root Fibre, Sugar, Fruit Juices from Concentrate 5.5% (Strawberry 3.5%, Lemon 2%), Apple Cider Vinegar, Natural Strawberry and Lemon Flavourings with other Natural Flavourings, Agave Inulin, Sweetener (Steviol Glycosides from Stevia), Black Carrot Juice Concentrate.