

The information on the [Erudus System](#) has been supplied by the manufacturers of the products and, whilst the owners of the Erudus System take steps to ensure the information is regularly updated, they give no warranty and no guarantee that the information is accurate. Product information and ingredients may change, please always read product labels carefully in addition to using the information provided by Erudus One.

We do not accept liability for any inaccuracies or incorrect information contained on this site. Please visit <http://www.erudus.com/terms-and-conditions> for full terms and conditions.

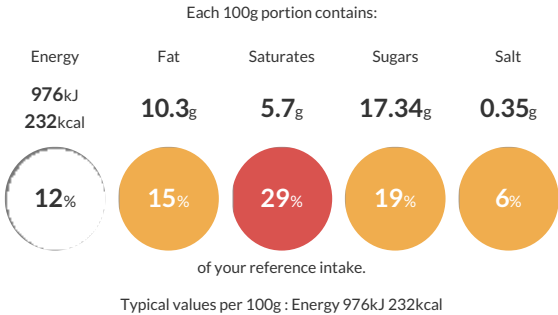
## Strawberry Gateau 2 Layer Gateau

Short Product Name:  
Strawberry Gateau

A two-layer gateau made with stabilised dairy cream and strawberry filling layered between light textured vanilla sponges and decorated with stabilised cream rosettes and strawberries covered in a strawberry sauce. Side decorated with biscuit crumb. Solid.

Traded Unit GTIN: 05010823522172 Internal GTIN: 5010823105481 Supplier : Mademoiselle Desserts (Taunton) Suppliers Product Code : F01011

### Reference Intake



### Nutritional Information

| Typical Values     | Per 100g         |
|--------------------|------------------|
| Energy             | 976kJ<br>232kCal |
| Carbohydrates      | 32.22g           |
| of which sugars    | 17.34g           |
| Fat                | 10.3g            |
| of which saturates | 5.7g             |
| Fibre              | 0.8g             |
| Protein            | 3.1g             |
| Salt               | 0.35g            |

### Allergy Information

Key: Contains May Contain

  
Contains Cereal/Gluten

  
Contains Milk

  
Contains Eggs

  
Does Not Contain Peanuts

  
May Contain Nuts

  
Does Not Contain Crustaceans

  
Does Not Contain Mustard

  
Does Not Contain Fish

  
Does Not Contain Lupin

  
Does Not Contain Sesame

  
Does Not Contain Celery

  
Does Not Contain Soya

  
Does Not Contain Molluscs

  
Does Not Contain Sulphur Dioxide

### Dietary Information

Key: Suitable for

  
Suitable for Vegetarian

  
May not be suitable for Vegan

  
May not be suitable for Kosher

  
May not be suitable for Halal

  
NO DATA for Coeliac

### Ingredients

Strawberry Sauce (23%) [Strawberries (9.2%), Water, Glucose Syrup, Sugar, Modified Maize Starch, Acidity Regulator (E330), Natural Flavouring, Colours (E163, E100), Stabiliser (E415)], Cream (MILK) (19%), Wheat Flour (WHEAT Flour, Calcium Carbonate, Iron, Niacin, Thiamin), EGG, Strawberry Compote (9.2%) [Water, Strawberries, Sugar, Modified Maize Starch, Acidity Regulator (E330), Natural Flavouring, Gelling Agent (E440), Colour (E163)], Sugar, Water, Biscuit Crumb (3.2%) [Wheat Flour (WHEAT Flour, Calcium Carbonate, Iron, Niacin, Thiamin), Vegetable Oil (Palm, Rapeseed), Sugar, Whey Powder (MILK), Raising Agent (E500i), Salt, Natural Flavouring], Humectant (E422), WHEAT Flour, Margarine [Palm Oil, Rapeseed Oil, Water, Emulsifier (E471)], Whey Powder (MILK), Dextrose, Raising Agents (E450i, E500ii), Glucose, Emulsifiers (E471, E475), BUTTERMILK Powder, Flavouring, Stabiliser (E407), Acidity Regulator (E525), Colour (E100).