

The information on the [Erudus System](#) has been supplied by the manufacturers of the products and, whilst the owners of the Erudus System take steps to ensure the information is regularly updated, they give no warranty and no guarantee that the information is accurate. Product information and ingredients may change, please always read product labels carefully in addition to using the information provided by Erudus One.

We do not accept liability for any inaccuracies or incorrect information contained on this site. Please visit <http://www.erudus.com/terms-and-conditions> for full terms and conditions.

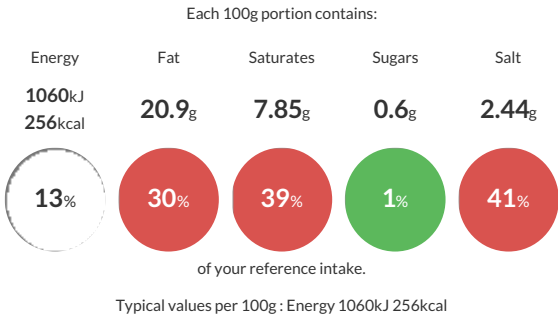
Big Al's B/wood Smkd Gourmet Pork H/Dog 4.32 Kg (6 packs of 8 hotdogs)

Short Product Name:
Beechwood smoked Gourmet Pork Hot Dog

Frozen, Fully cooked Gourmet Pork Hotdog filled in a natural sheep casing and smoked over Beechwood. 6 packs of 8 x 90g hotdogs

Traded Unit GTIN: 05099556020537 Internal GTIN: 5099556020520 Supplier : Kepak Foodservice Suppliers Product Code : 959035

Reference Intake



Nutritional Information

Typical Values	Per 100g
Energy	1060kJ 256kCal
Carbohydrates	3.6g
of which sugars	0.6g
Fat	20.9g
of which saturates	7.85g
Fibre	-g
Protein	15.9g
Salt	2.44g

Allergy Information

Key: Contains May Contain


Does Not Contain Cereal/Gluten


Does Not Contain Milk


Does Not Contain Eggs


Does Not Contain Peanuts


Does Not Contain Nuts


Does Not Contain Crustaceans


Does Not Contain Mustard


Does Not Contain Fish


Does Not Contain Lupin


Does Not Contain Sesame


Does Not Contain Celery


Does Not Contain Soya


Does Not Contain Molluscs


Does Not Contain Sulphur Dioxide

Dietary Information

Key: Suitable for


NO DATA for Vegetarian


NO DATA for Vegan


May not be suitable for Kosher


May not be suitable for Halal


NO DATA for Coeliac

Allergen Statement
N/A

Ingredients

Pork (87%), Water, Salt, Dextrose, Spices, Stabilisers, Di and Tri-Sodium Phosphate, Spice Extract, Antioxidants, L-Ascorbic Acid, Sodium L-Ascorbate, Preservative, Sodium Nitrite.
Filled in a natural sheep casing.
Although great care has been taken to remove all bone, some may remain.