

Supplier's Product Code : 63642
 Product Added : 01 June 2026
 Last Updated by Supplier : 01 June 2026
 erudus id : b566338e13c94630936628ae3ab13699



The information on the Erudus System has been supplied by the manufacturers of the products and, whilst the owners of the Erudus System take steps to ensure the information is regularly updated, they give no warranty and no guarantee that the information is accurate. Product information and ingredients may change, please always read product labels carefully in addition to using the information provided by Erudus One.

We do not accept liability for any inaccuracies or incorrect information contained on this site. Please visit <http://www.erudus.com/terms-and-conditions> for full terms and conditions.

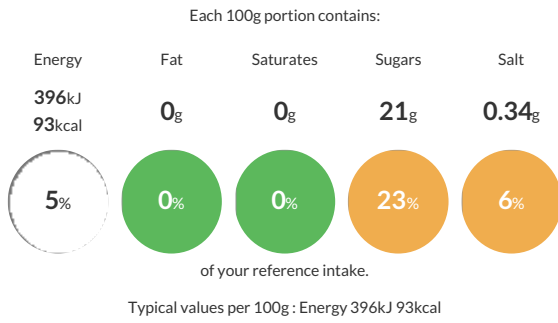
Freshburst® Pearls Salted Caramel Flavour 200g

Short Product Name:
 Salted Caramel Pearls

Flavoured Freshburst® Pearls with a liquid centre for an amazing taste sensation.

Traded Unit GTIN: 5060065763659 Internal GTIN: 5060065763642 Supplier: Imaginative Cuisine Limited Suppliers Product Code: 63642

Reference Intake



Nutritional Information

Typical Values	Per 100g
Energy	396kJ 93kCal
Carbohydrates	23g
of which sugars	21g
Fat	0g
of which saturates	0g
Fibre	-g
Protein	0g
Salt	0.34g

Allergy Information

Key: Contains May Contain

Does Not Contain Cereal/Gluten	Does Not Contain Milk	Does Not Contain Eggs	Does Not Contain Peanuts	Does Not Contain Nuts	Does Not Contain Crustaceans	Does Not Contain Mustard
Does Not Contain Fish	Does Not Contain Lupin	Does Not Contain Sesame	Does Not Contain Celery	Does Not Contain Soya	Does Not Contain Molluscs	Does Not Contain Sulphur Dioxide

Dietary Information

Key: Suitable for

Suitable for Vegetarian	Suitable for Vegan	May not be suitable for Kosher	May not be suitable for Halal	NO DATA for Coeliac
-------------------------	--------------------	--------------------------------	-------------------------------	---------------------

Ingredients

Salted caramel syrup 62.8% (sugar, water, natural flavour, salt, colour : caramel), water, thickener: cellulose gum, gelling agent: calcium chloride and sodium alginate, colour: caramelised sugar syrup, acidity regulator: citric acid.