

The information on the [Erudus System](#) has been supplied by the manufacturers of the products and, whilst the owners of the Erudus System take steps to ensure the information is regularly updated, they give no warranty and no guarantee that the information is accurate. Product information and ingredients may change, please always read product labels carefully in addition to using the information provided by Erudus One.

We do not accept liability for any inaccuracies or incorrect information contained on this site. Please visit <http://www.erudus.com/terms-and-conditions> for full terms and conditions.

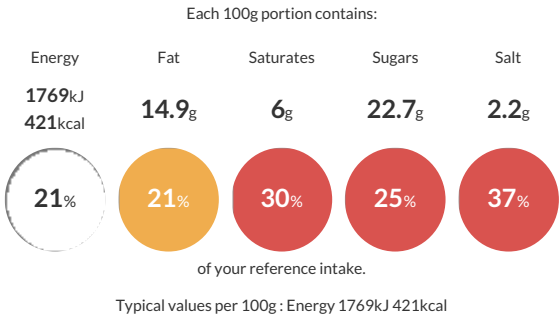
Chocolate Sponge Mix (2020 Sugar Compliant) 4 x 3.5kg

Short Product Name:
Chocolate Sponge Mix

A rich Chocolate Cake suitable for use as a tray bake catering sponge or individual loaf tin. * Just add water* Can also be used for Muffins.

Traded Unit GTIN: 5028081002916 Internal GTIN: 5028081002398 Supplier : Middleton Foods Suppliers Product Code : CM0006

Reference Intake



Nutritional Information

Typical Values	Per 100g
Energy	1769kJ 421kCal
Carbohydrates	64g
of which sugars	22.7g
Fat	14.9g
of which saturates	6g
Fibre	3.5g
Protein	8.1g
Salt	2.2g

Allergy Information

Key: Contains May Contain


Contains Cereal/Gluten


Contains Milk


Contains Eggs


Does Not Contain Peanuts


Does Not Contain Nuts


Does Not Contain Crustaceans


Does Not Contain Mustard


Does Not Contain Fish


Does Not Contain Lupin


Does Not Contain Sesame


Does Not Contain Celery


Contains Soya


Does Not Contain Molluscs


Does Not Contain Sulphur Dioxide

Dietary Information

Key: Suitable for


Suitable for Vegetarian


May not be suitable for Vegan


May not be suitable for Kosher


May not be suitable for Halal


May not be suitable for Coeliac

Ingredients

WHEAT Flour (WHEAT, Calcium, Iron, Niacin, Thiamin), Sugar, Vegetable Oil Blend (Palm & Rapeseed Oil), Reduced Fat Cocoa Powder (4.8%), Raising Agents (E500(ii), E450(i), E341(i)), Dried Whole EGG Powder, Skimmed MILK Powder, Dextrose, Butter MILK Powder, MILK Protein (Whey Powder, Acid Casein), Chocolate Flavouring (0.4%), Dried EGG White Powder, Maltodextrin, Thickener (Xanthan Gum), Colour (Caramel Powder), Emulsifier (Glucose Syrup, E472b, E477, SOYA Flour), Flavouring.