

The information on the [Erudus System](#) has been supplied by the manufacturers of the products and, whilst the owners of the Erudus System take steps to ensure the information is regularly updated, they give no warranty and no guarantee that the information is accurate. Product information and ingredients may change, please always read product labels carefully in addition to using the information provided by Erudus One.

We do not accept liability for any inaccuracies or incorrect information contained on this site. Please visit <http://www.erudus.com/terms-and-conditions> for full terms and conditions.

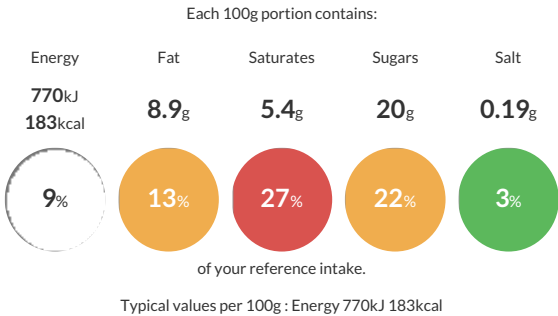
Ben & Jerry's Chocolate Fudge Brownie Ice Cream 100ml

Short Product Name:
Ben & Jerry's Chocolate Fudge Brownie Ice Cream 100ml

Chocolate ice cream with chocolate brownie pieces (17%)

Traded Unit GTIN: **8000920715208** Internal GTIN: **8711200562718** Supplier : **Unilever UK Limited** Suppliers Product Code : **67331835**

Reference Intake



Nutritional Information

Typical Values	Per 100g
Energy	770kJ 183kCal
Carbohydrates	22g
of which sugars	20g
Fat	8.9g
of which saturates	5.4g
Fibre	-g
Protein	3.1g
Salt	0.19g

Allergy Information


Key: **Contains** **May Contain**


Contains Cereal/Gluten


Contains Milk


Contains Eggs


Does Not Contain Peanuts


Does Not Contain Nuts


Does Not Contain Crustaceans


Does Not Contain Mustard


Does Not Contain Fish


Does Not Contain Lupin


Does Not Contain Sesame


Does Not Contain Celery


Does Not Contain Soya


Does Not Contain Molluscs


Does Not Contain Sulphur Dioxide

Dietary Information

Key: **Suitable for**


Suitable for Vegetarian


NO DATA for Vegan


May not be suitable for Kosher


May not be suitable for Halal


NO DATA for Coeliac

Ingredients

Ingredients: Water, sugar, cream (**MILK**) (24%), condensed skimmed **MILK**, cocoa powder (4%), **WHEAT** flour, fat-reduced cocoa powder, fully refined soybean oil, free range **EGG** yolk, **EGG**, dried **EGG** white, salt, stabilisers (guar gum, carrageenan), malted **BARLEY** flour, vanilla extract, raising agent (sodium bicarbonate).