

The information on the **Erudus System** has been supplied by the manufacturers of the products and, whilst the owners of the Erudus System take steps to ensure the information is regularly updated, they give no warranty and no guarantee that the information is accurate. Product information and ingredients may change, please always read product labels carefully in addition to using the information provided by Erudus One.

We do not accept liability for any inaccuracies or incorrect information contained on this site. Please visit <http://www.erudus.com/terms-and-conditions> for full terms and conditions.

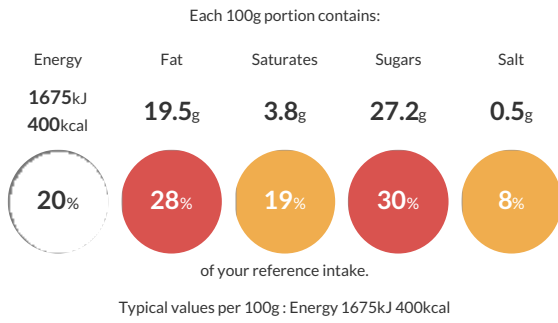
Triple Chocolate Muffin

Short Product Name:
 Triple Chocolate Muffin

A devilishly moist triple chocolate muffin, including white, milk and dark chocolate chunks and an indulgent chocolate filling.

Traded Unit GTIN: **05010066121644** Internal GTIN: **05010066121644** Supplier: **Kara Foodservice (Fletchers)** Suppliers Product Code: **F02164**

Reference Intake



Nutritional Information

Typical Values	Per 100g
Energy	1675kJ 400kCal
Carbohydrates	49.6g
of which sugars	27.2g
Fat	19.5g
of which saturates	3.8g
Fibre	1.8g
Protein	5.7g
Salt	0.5g

Allergy Information

Key: **Contains** **May Contain**

Contains Cereal/Gluten	Contains Milk	Contains Eggs	Does Not Contain Peanuts	Does Not Contain Nuts	Does Not Contain Crustaceans	Does Not Contain Mustard
Does Not Contain Fish	Does Not Contain Lupin	May Contain Sesame	Does Not Contain Celery	Contains Soya	Does Not Contain Molluscs	Does Not Contain Sulphur Dioxide

Dietary Information

Key: **Suitable for**

Suitable for Vegetarian	May not be suitable for Vegan	May not be suitable for Kosher	May not be suitable for Halal	NO DATA for Coeliac
-------------------------	-------------------------------	--------------------------------	-------------------------------	---------------------

Ingredients

Wheat Flour (Wheat Flour, Calcium Carbonate, Folic Acid, Iron, Niacin, Thiamin), Rapeseed Oil, Sugar, Egg, Chocolate Filling (8%) (Sugar, Glucose Syrup, Rapeseed Oil, Water, Fat Reduced Cocoa Powder, Palm Oil, Sweetened Condensed Milk, Butter (Milk), Cocoa Mass, Emulsifiers: E471, E322 (Soya); Flavouring, Salt, Cocoa Butter, Preservative: E202), White Chocolate Chunks (5%) (Sugar, Dried Whole Milk, Cocoa Butter, Dried Skimmed Milk, Emulsifier: E322 (Soya), Flavouring), Dark Chocolate Chunks (3.5%) (Sugar, Cocoa Mass, Cocoa Butter, Emulsifier: E322 (Soya), Flavouring), Fat Reduced Cocoa Powder, Cornflour, Egg White, Water, Milk Chocolate Chunks (1%) (Sugar, Dried Whole Milk, Cocoa Butter, Cocoa Mass, Dried Whey (Milk), Dried Skimmed Milk, Emulsifier: E322 (Soya); Flavouring), Raising Agents: E450i, E501ii; Maltodextrin, Dried Whey (Milk), Emulsifier: E471; Salt.