

The information on the [Erudus System](#) has been supplied by the manufacturers of the products and, whilst the owners of the Erudus System take steps to ensure the information is regularly updated, they give no warranty and no guarantee that the information is accurate. Product information and ingredients may change, please always read product labels carefully in addition to using the information provided by Erudus One.

We do not accept liability for any inaccuracies or incorrect information contained on this site. Please visit <http://www.erudus.com/terms-and-conditions> for full terms and conditions.

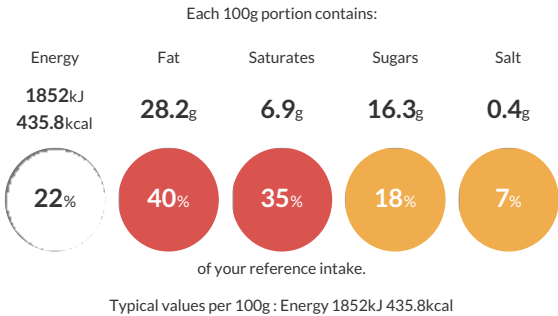
SATAY PASTE

Short Product Name:
SATAY PASTE

Peanut satay paste fragranced with lemongrass and galangal

Traded Unit GTIN: 05060445470191 Internal GTIN: 5060445470184 Supplier : The Street Food Company Suppliers Product Code : ASF110

Reference Intake



Nutritional Information

Typical Values	Per 100g
Energy	1852kJ 435.8kCal
Carbohydrates	35g
of which sugars	16.3g
Fat	28.2g
of which saturates	6.9g
Fibre	2.7g
Protein	10.5g
Salt	0.4g

Allergy Information

Key: Contains May Contain


Contains Cereal/Gluten


Does Not Contain Milk


Does Not Contain Eggs


Contains Peanuts


May Contain Nuts


Does Not Contain Crustaceans


Does Not Contain Mustard


Does Not Contain Fish


Does Not Contain Lupin


Does Not Contain Sesame


Contains Celery


Contains Soya


Does Not Contain Molluscs


Does Not Contain Sulphur Dioxide

Dietary Information

Key: Suitable for


Suitable for Vegetarian


Suitable for Vegan


May not be suitable for Kosher


May not be suitable for Halal


May not be suitable for Coeliac

Ingredients

PEANUTS (27%), Sugar, Coconut Powder, Red Peppers, Rapeseed Oil, Ketjap Manis Sauce, Tamarind Puree, Lemongrass (1.3%), Galangal (1.3%), Garlic, Ginger, Corn Starch, Onions, Vegetable Bouillon, Spices, Curry Powder Spice Blend, Concentrated Lime Juice, Chillies, Salt.
Ketjap Manis Sauce contains: Palm Sugar, Water, Salt, **SOYA BEAN, WHEAT**, Sodium Benzoate
Vegetable Bouillon contains: **CELERY**