

The information on the [Erudus System](#) has been supplied by the manufacturers of the products and, whilst the owners of the Erudus System take steps to ensure the information is regularly updated, they give no warranty and no guarantee that the information is accurate. Product information and ingredients may change, please always read product labels carefully in addition to using the information provided by Erudus One.

We do not accept liability for any inaccuracies or incorrect information contained on this site. Please visit <http://www.erudus.com/terms-and-conditions> for full terms and conditions.

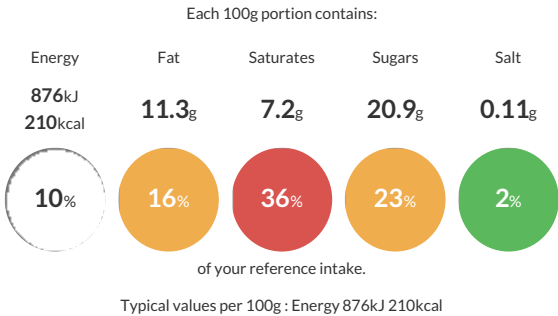
# SILVER PAIL DAIRY Mint Choc Chip Easyscoop Ice Cream

Short Product Name:  
SILVER PAIL DAIRY Mint Choc Chip Easyscoop Ice Cream

Mint flavour ice cream with chocolate pieces.

Traded Unit GTIN: 05011035600269 Internal GTIN: 5011035500798 Supplier : Silver Pail Dairy Suppliers Product Code : 70007

## Reference Intake



## Nutritional Information

Typical Values	Per 100g
Energy	876kJ 210kCal
Carbohydrates	24.1g
of which sugars	20.9g
Fat	11.3g
of which saturates	7.2g
Fibre	0.5g
Protein	2.9g
Salt	0.11g

## Allergy Information

Key: Contains May Contain

  
Does Not Contain Cereal/Gluten

  
Contains Milk

  
Does Not Contain Eggs

  
Does Not Contain Peanuts

  
May Contain Nuts

  
Does Not Contain Crustaceans

  
Does Not Contain Mustard

  
Does Not Contain Fish

  
Does Not Contain Lupin

  
Does Not Contain Sesame

  
Does Not Contain Celery

  
Contains Soya

  
Does Not Contain Molluscs

  
Does Not Contain Sulphur Dioxide

## Dietary Information

Key: Suitable for

  
Suitable for Vegetarian

  
May not be suitable for Vegan

  
May not be suitable for Kosher

  
May not be suitable for Halal

  
NO DATA for Coeliac

## Ingredients

Reconstituted Skimmed <b>Milk</b> Powder, Sugar, Cream (<b>Milk</b>), Chocolate Pieces (5%) (Sugar, Cocoa Mass, Cocoa Butter, Emulsifier (<b>Soya</b> Lecithin), Natural Vanilla Flavouring), Vegetable Oil (Palm Kernel Oil, Palm Oil), Glucose Syrup, Whey Powder (<b>Milk</b>), Humectant (Glycerol), Emulsifier (Mono- and Diglycerides of Fatty Acids), Stabilisers (Guar Gum, Locust Bean Gum, Xanthan Gum), Colour (Copper Chlorophyllin), Flavouring.