

The information on the [Erudus System](#) has been supplied by the manufacturers of the products and, whilst the owners of the Erudus System take steps to ensure the information is regularly updated, they give no warranty and no guarantee that the information is accurate. Product information and ingredients may change, please always read product labels carefully in addition to using the information provided by Erudus One.

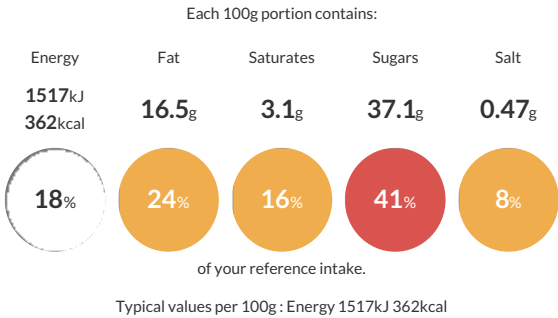
We do not accept liability for any inaccuracies or incorrect information contained on this site. Please visit <http://www.erudus.com/terms-and-conditions> for full terms and conditions.

## Square Sticky Toffee Sponge Pudding (1 x 12)

Individual Sticky Toffee Sponge Pudding with Toffee Sauce

Traded Unit GTIN: 05010823520598 Internal GTIN: Supplier : Mademoiselle Desserts (Taunton) Suppliers Product Code: F49440

### Reference Intake



### Nutritional Information

Typical Values	Per 100g
Energy	1517kJ 362kCal
Carbohydrates	49.6g
of which sugars	37.1g
Fat	16.5g
of which saturates	3.1g
Fibre	0.9g
Protein	3.3g
Salt	0.47g

### Allergy Information

Key: Contains May Contain

  
Contains Cereal/Gluten

  
Contains Milk

  
Contains Eggs

  
Does Not Contain Peanuts

  
May Contain Nuts

  
Does Not Contain Crustaceans

  
Does Not Contain Mustard

  
Does Not Contain Fish

  
Does Not Contain Lupin

  
Does Not Contain Sesame

  
Does Not Contain Celery

  
May Contain Soya

  
Does Not Contain Molluscs

  
Does Not Contain Sulphur Dioxide

### Dietary Information

Key: Suitable for

  
Suitable for Vegetarian

  
May not be suitable for Vegan

  
May not be suitable for Kosher

  
May not be suitable for Halal

  
May not be suitable for Coeliac

### Ingredients

Invert Sugar Syrup (24%), **WHEAT** Flour (Calcium Carbonate, Niacin, Iron, Thiamin), Rapeseed Oil, Water, Free Range **EGG**, Sugar, Dark Brown Sugar (Sugar, Cane Molasses), Cane Molasses, Whipping Cream (**MILK**), Unsalted Butter (**MILK**), Raising Agent (Raising Agents: Disodium Diphosphate, Sodium Bicarbonate, Calcium Phosphate. **WHEAT** Flour), Stabiliser Mix (Water, Sugar, Emulsifiers: Mono- And Diglycerides Of Fatty Acids, Polyglycerol Esters Of Fatty Acids.), Whey Powder (**MILK**), Modified Waxy Maize Starch, Modified Maize Starch, Mixed Spice (Coriander, Cassia, Ginger, Cardamom, Cloves, Fennel, Nutmeg), Caramelised Sugar Syrup, Thickener: Xanthan Gum.