

The information on the [Erudus System](#) has been supplied by the manufacturers of the products and, whilst the owners of the Erudus System take steps to ensure the information is regularly updated, they give no warranty and no guarantee that the information is accurate. Product information and ingredients may change, please always read product labels carefully in addition to using the information provided by Erudus One.

We do not accept liability for any inaccuracies or incorrect information contained on this site. Please visit <http://www.erudus.com/terms-and-conditions> for full terms and conditions.

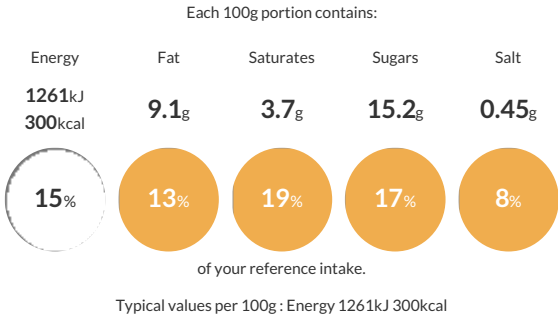
# Kara Giant Sugar Jam Doughnut x 60

Short Product Name:

A rich sweet yeasted dough that has been deep fried in vegetable oil, dusted with a sugar coating and injected with a apple and raspberry jam filling

Traded Unit GTIN: 05010066111485 Internal GTIN: Supplier : Kara Foodservice (Fletchers) Suppliers Product Code : F01148

## Reference Intake



## Nutritional Information

| Typical Values     | Per 100g          |
|--------------------|-------------------|
| Energy             | 1261kJ<br>300kCal |
| Carbohydrates      | 47.3g             |
| of which sugars    | 15.2g             |
| Fat                | 9.1g              |
| of which saturates | 3.7g              |
| Fibre              | 1.9g              |
| Protein            | 6.2g              |
| Salt               | 0.45g             |

## Allergy Information

Key: Contains May Contain

  
Contains Cereal/Gluten

  
May Contain Milk

  
May Contain Eggs

  
Does Not Contain Peanuts

  
Does Not Contain Nuts

  
Does Not Contain Crustaceans

  
Does Not Contain Mustard

  
Does Not Contain Fish

  
Does Not Contain Lupin

  
May Contain Sesame

  
Does Not Contain Celery

  
May Contain Soya

  
Does Not Contain Molluscs

  
Does Not Contain Sulphur Dioxide

## Dietary Information

Key: Suitable for

  
Suitable for Vegetarian

  
May not be suitable for Vegan

  
May not be suitable for Kosher

  
May not be suitable for Halal

  
May not be suitable for Coeliac

**Allergen Statement**

For allergens, including cereals containing gluten, see ingredients in **CAPITALS**. Also, may contain sesame seed, soya, egg and milk.

## Ingredients

Wheat Flour (**WHEAT** Flour, Calcium Carbonate, Iron, Niacin, Thiamin), Water, Apple & Raspberry Jam (18%) (Glucose-Fructose Syrup, Apple Purée, Sugar, Raspberry Purée, Acidity Regulators (E330, E331iii), Colour (E163), Gelling Agent (E440a), Flavouring), Palm Oil, Sweet Dust (Dextrose, Cornflour, Palm Oil), Rapeseed Oil, Dextrose, Sugar, Raising Agents (E501, E450, E341), **WHEAT** Gluten, Yeast, Emulsifiers (E481, E471), Potassium Chloride, Salt, Stabiliser (E466), Flour Treatment Agent (E300).