

Supplier's Product Code :
 Product Added :
 Last Updated by Supplier :
 erudus id :

91308650
 15 April 2026
 15 April 2026
 bdc187df79304a5399e423a511ce0920



The information on the **Erudus System** has been supplied by the manufacturers of the products and, whilst the owners of the Erudus System take steps to ensure the information is regularly updated, they give no warranty and no guarantee that the information is accurate. Product information and ingredients may change, please always read product labels carefully in addition to using the information provided by Erudus One.

We do not accept liability for any inaccuracies or incorrect information contained on this site. Please visit <http://www.erudus.com/terms-and-conditions> for full terms and conditions.

FLORA 31% 8x1L

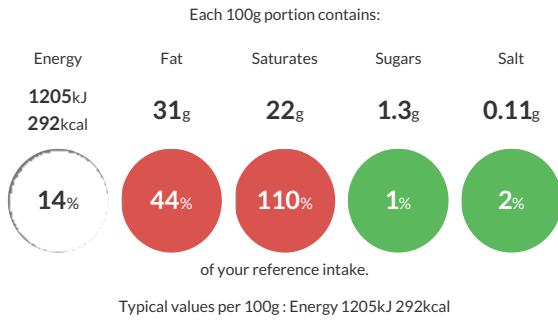
Short Product Name:

Blend of lentil protein preparation and vegetable fat and oil. For cooking and whipping

Multipurpose, for cooking and whipping, plant based (non dairy). Fat level 31%. *Non-dairy cream alternative for cooking and whipping. *Blend of lentil protein preparation and vegetable fat and oil. *For cooking and whipping.

Traded Unit GTIN: **8719200103313** Internal GTIN: **8719200094901** Supplier : **Flora Food Sales UK Limited** Suppliers Product Code : **91308650**

Reference Intake



Nutritional Information

Typical Values	Per 100g
Energy	1205kJ 292kCal
Carbohydrates	2.3g
of which sugars	1.3g
Fat	31g
of which saturates	22g
Fibre	<0.5g
Protein	0.6g
Salt	0.11g

Allergy Information

Key: **Contains** **May Contain**



Gluten Claim

Gluten content is less than 20ppm.

Allergen Statement

N/A

Dietary Information

Key: **Suitable for**



Ingredients

Lentil protein preparation (water, 1.1% lentil flour), coconut fat, rapeseed oil, sugar, modified corn starch, emulsifiers (sunflower lecithin, sugar esters of fatty acids, mono- and diglycerides of fatty acids), stabilisers (guar gum, locust bean gum), natural flavouring, salt, colour (beta-carotene).