

The information on the [Erudus System](#) has been supplied by the manufacturers of the products and, whilst the owners of the Erudus System take steps to ensure the information is regularly updated, they give no warranty and no guarantee that the information is accurate. Product information and ingredients may change, please always read product labels carefully in addition to using the information provided by Erudus One.

We do not accept liability for any inaccuracies or incorrect information contained on this site. Please visit <http://www.erudus.com/terms-and-conditions> for full terms and conditions.

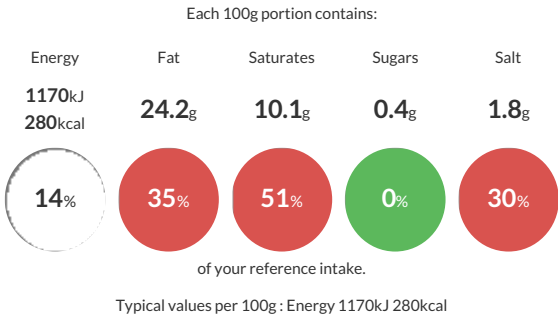
Ardennes Pate x 1kg

Short Product Name:  
Ardennes Pate

Ardennes pate loaf x 1kg

Traded Unit GTIN:  Internal GTIN: Supplier :  Stephens Fresh Foods Suppliers Product Code :  BP8

Reference Intake




Nutritional Information

Typical Values	Per 100g
Energy	1170kJ 280kCal
Carbohydrates	1.1g
of which sugars	0.4g
Fat	24.2g
of which saturates	10.1g
Fibre	-g
Protein	14.9g
Salt	1.8g

Allergy Information

Key:  Contains  May Contain

  
Does Not Contain Cereal/Gluten

  
Contains Milk

  
Does Not Contain Eggs

  
Does Not Contain Peanuts

  
May Contain Nuts

  
Does Not Contain Crustaceans

  
Does Not Contain Mustard

  
Does Not Contain Fish

  
Does Not Contain Lupin

  
Does Not Contain Sesame

  
Does Not Contain Celery

  
Does Not Contain Soya

  
Does Not Contain Molluscs

  
Does Not Contain Sulphur Dioxide

Allergen Statement  
Contains **MILK**.  
May contain traces of **NUTS**: walnuts & hazelnuts

Ingredients

Pork liver (42%), chicken fat, chicken meat (21%), potato starch, salt, antioxidant (E301, E326) emulsifier (E472c), onions, **MILK** protein, dextrose, tomatoes, spices, yeast extract, rice flour, preservative (E250, E261) pork gelatine

Dietary Information

Key:  Suitable for

  
NO DATA for Vegetarian

  
NO DATA for Vegan

  
May not be suitable for Kosher

  
May not be suitable for Halal

  
NO DATA for Coeliac