

The information on the [Erudus System](#) has been supplied by the manufacturers of the products and, whilst the owners of the Erudus System take steps to ensure the information is regularly updated, they give no warranty and no guarantee that the information is accurate. Product information and ingredients may change, please always read product labels carefully in addition to using the information provided by Erudus One.

We do not accept liability for any inaccuracies or incorrect information contained on this site. Please visit <http://www.erudus.com/terms-and-conditions> for full terms and conditions.

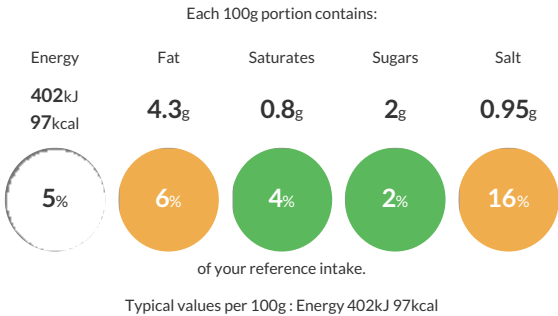
Chicken Curry - Multi 1.400kg x 2

Short Product Name:
Chicken Curry

Tender chicken breast in a mild curry sauce

Traded Unit GTIN: 5055775100443 Internal GTIN: Supplier : Scheff Foods Ltd Suppliers Product Code : CHCY-M

Reference Intake



Nutritional Information

Typical Values	Per 100g
Energy	402kJ 97kCal
Carbohydrates	4.9g
of which sugars	2g
Fat	4.3g
of which saturates	0.8g
Fibre	1.1g
Protein	8.9g
Salt	0.95g

Allergy Information

Key: Contains May Contain



Does Not Contain Cereal/Gluten



Contains Milk



Does Not Contain Eggs



Does Not Contain Peanuts



May Contain Nuts



Does Not Contain Crustaceans



Does Not Contain Mustard



Does Not Contain Fish



Does Not Contain Lupin



Does Not Contain Sesame



Contains Celery



Does Not Contain Soya



Does Not Contain Molluscs



Does Not Contain Sulphur Dioxide

Dietary Information

Key: Suitable for



May not be suitable for Vegetarian



May not be suitable for Vegan



May not be suitable for Kosher



May not be suitable for Halal



NO DATA for Coeliac

Ingredients

Water, Cooked Chicken Breast (30%) (Contains: Chicken, Water, Corn Starch, Salt), Onion, Tomato, Rapeseed Oil, Cornflour, Spices, Sugar, Chicken Bouillion (Contains: Salt, Potato Starch, Palm Oil, Maltodextrin, Natural Flavourings, Chicken Fat, Sugar, Yeast Extract, Chicken Extract , Chicken, Carrot, Sage, Spices [CELERY]), Coconut Milk Powder (Contains: Coconut Milk Solids, Maltodextrin, Sodium Caseinate [MILK]), Tomato Puree, Salt, Garlic Puree, Coriander, Lemon Juice