

Supplier's Product Code :  
Product Added :  
Last Updated by Supplier :  
erudus id :

SF055  
24 February 2025  
24 February 2025  
be94f5dfe8dc4ceabea8a35354467f2f



The information on the Erudus System has been supplied by the manufacturers of the products and, whilst the owners of the Erudus System take steps to ensure the information is regularly updated, they give no warranty and no guarantee that the information is accurate. Product information and ingredients may change, please always read product labels carefully in addition to using the information provided by Erudus One.

We do not accept liability for any inaccuracies or incorrect information contained on this site. Please visit <http://www.erudus.com/terms-and-conditions> for full terms and conditions.

## ROTI PARATHA PACK (6 Packets x 15 pieces each / 1200g)

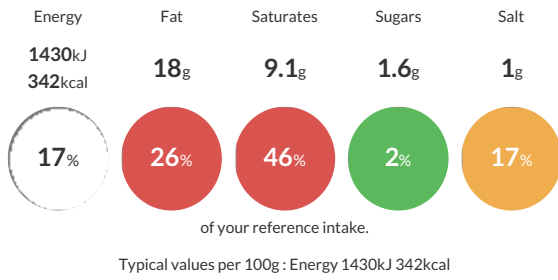
Short Product Name:  
Layered flat bread

Layered flat bread

Traded Unit GTIN: 05030039003012 Internal GTIN: 5030039005511 Supplier: The Street Food Company Suppliers Product Code: SF055

### Reference Intake

Each 100g portion contains:



### Nutritional Information

Typical Values	Per 100g
Energy	1430kJ 342kCal
Carbohydrates	37.6g
of which sugars	1.6g
Fat	18g
of which saturates	9.1g
Fibre	-g
Protein	6.1g
Salt	1g

### Allergy Information

Key: **Contains** **May Contain**



### Dietary Information

Key: **Suitable for**



### Ingredients

<b>Wheat</b> Flour, Water, Margarine (<b>Soy</b> - Palm Oil Based), Sugar, Salt, Baking Powder.