

The information on the [Erudus System](#) has been supplied by the manufacturers of the products and, whilst the owners of the Erudus System take steps to ensure the information is regularly updated, they give no warranty and no guarantee that the information is accurate. Product information and ingredients may change, please always read product labels carefully in addition to using the information provided by Erudus One.

We do not accept liability for any inaccuracies or incorrect information contained on this site. Please visit <http://www.erudus.com/terms-and-conditions> for full terms and conditions.

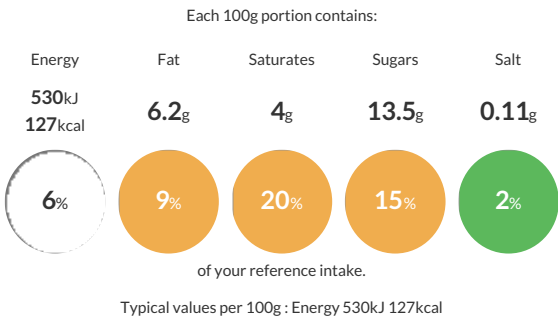
Cookie Dough 4 x 5 litre

Short Product Name:  
Cookie Dough Ice Cream

A vanilla ice cream swirled with a rich chocolate sauce and pieces of cookie dough

Traded Unit GTIN: 5060016674980 Internal GTIN: 5060016674973 Supplier : Yorvale Ltd Suppliers Product Code : COOKIE4X5LITRE

Reference Intake



Nutritional Information

Typical Values	Per 100g
Energy	530kJ 127kCal
Carbohydrates	15.8g
of which sugars	13.5g
Fat	6.2g
of which saturates	4g
Fibre	0.17g
Protein	2.5g
Salt	0.11g

Allergy Information

Key: Contains May Contain

  
Contains  
Cereal/Gluten

  
Contains  
Milk

  
Does Not  
Contain  
Eggs

  
Does Not  
Contain  
Peanuts

  
May Contain  
Nuts

  
Does Not  
Contain  
Crustaceans

  
Does Not  
Contain  
Mustard

  
Does Not  
Contain  
Fish

  
Does Not  
Contain  
Lupin

  
Does Not  
Contain  
Sesame

  
Does Not  
Contain  
Celery

  
Contains  
Soya

  
Does Not  
Contain  
Molluscs

  
Does Not  
Contain  
Sulphur  
Dioxide

Dietary Information

Key: Suitable for

  
Suitable for  
Vegetarian

  
May not be  
suitable for  
Vegan

  
May not be  
suitable for  
Kosher

  
May not be  
suitable for  
Halal

  
NO DATA for  
Coeliac

Allergen Statement  
This product has been produced in a factory that uses nut ingredients.

Ingredients

<b>MILK</b>, Double Cream (<b>MILK</b>), Sugar, Chocolate Sauce (7.3%)(Water, Sugar, Glucose Syrup, Sweetened Condensed Skimmed <b>MILK</b>, Salted Butter (<b>MILK</b>), Cocoa Butter, Dark Chocolate (Cocoa Mass, Sugar, Cocoa Butter, Emulsifier: <b>SOYA</b> Lecithin, Natural Vanilla Flavouring), Stabiliser: Modified Waxy Maize Starch), Cookie Dough (6.1%) (<b>WHEAT</b> Flour, Sugar, Cane Sugar, Butter (<b>MILK</b>), Chocolate (Sugar Cocoa Mass, Cocoa Butter, Emulsifier: <b>SOYA</b> Lecithin, Natural Vanilla Flavour), Water, Glucose-Fructose Syrup, Salt, Raising Agent: Sodium Bicarbonate, Natural Flavouring (<b>BARLEY</b>), Vanilla Sugar (Sugar, Grinded Vanilla Pods), Skimmed <b>MILK</b> Powder, Glucose Syrup, Emulsifier: Mono- and Diglycerides of Fatty Acids, Stabilisers (Guar Gum, Carrageenan, Locust Bean Gum).