

The information on the [Erudus System](#) has been supplied by the manufacturers of the products and, whilst the owners of the Erudus System take steps to ensure the information is regularly updated, they give no warranty and no guarantee that the information is accurate. Product information and ingredients may change, please always read product labels carefully in addition to using the information provided by Erudus One.

We do not accept liability for any inaccuracies or incorrect information contained on this site. Please visit <http://www.erudus.com/terms-and-conditions> for full terms and conditions.

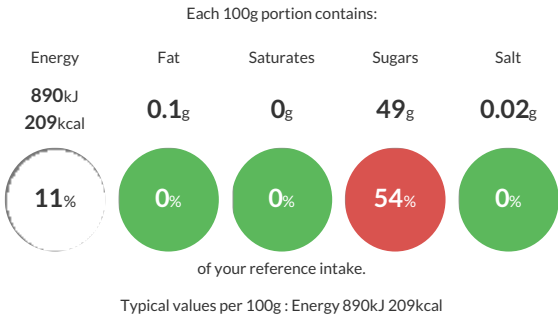
Chilli Jam 1.2kg

Short Product Name:
Chilli Jam

Chilli Jam- Sweet and Chilli Relish in 1.2kg catering plastic tub

Traded Unit GTIN: - Internal GTIN: Supplier : [The Wooden Spoon Preserving Company](#) Suppliers Product Code : [KFC515](#)

Reference Intake



Nutritional Information

Typical Values	Per 100g
Energy	890kJ 209kCal
Carbohydrates	50g
of which sugars	49g
Fat	0.1g
of which saturates	0g
Fibre	0.7g
Protein	0g
Salt	0.02g

Allergy Information

Key: Contains May Contain


Does Not Contain Cereal/Gluten


May Contain Milk


May Contain Eggs


May Contain Peanuts


May Contain Nuts


Does Not Contain Crustaceans


May Contain Mustard


Does Not Contain Fish


Does Not Contain Lupin


Does Not Contain Sesame


May Contain Celery


Does Not Contain Soya


Does Not Contain Molluscs


Does Not Contain Sulphur Dioxide

Dietary Information

Key: Suitable for


Suitable for Vegetarian


Suitable for Vegan


May not be suitable for Kosher


May not be suitable for Halal


NO DATA for Coeliac

Ingredients

Sugar, White Wine Vinegar (19%), Onions (15%), Red peppers (7%), Root Ginger, Red Chilli Peppers (4%), Water, Lemon Juice, Garlic, Pectin.