

Supplier's Product Code :
Product Added :
Last Updated by Supplier :
erudus id :

012190P
27 May 2026
28 May 2026
bfd4d5d744ae4df8a7c7be43da3ca575



The information on the Erudus System has been supplied by the manufacturers of the products and, whilst the owners of the Erudus System take steps to ensure the information is regularly updated, they give no warranty and no guarantee that the information is accurate. Product information and ingredients may change, please always read product labels carefully in addition to using the information provided by Erudus One.

We do not accept liability for any inaccuracies or incorrect information contained on this site. Please visit <http://www.erudus.com/terms-and-conditions> for full terms and conditions.

Purple Pineapple Chicken Tikka 1kg

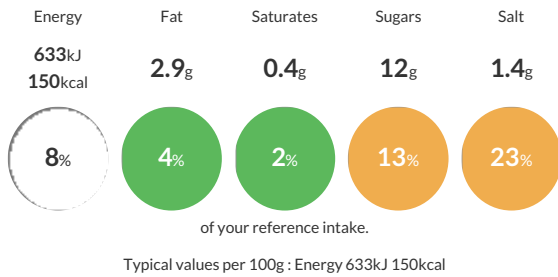
Short Product Name:
Chicken Tikka

Diced chicken breast coated in a mild curry sauce

Traded Unit GTIN: Internal GTIN: Supplier: Suppliers Product Code:

Reference Intake

Each 100g portion contains:



Nutritional Information

Typical Values	Per 100g
Energy	633kJ 150kCal
Carbohydrates	16g
of which sugars	12g
Fat	2.9g
of which saturates	0.4g
Fibre	0g
Protein	15g
Salt	1.4g

Allergy Information

Key: **Contains** **May Contain**



Dietary Information

Key: **Suitable for**



Ingredients

Chicken (50%) [Chicken (98%), Salt], Tikka Marinade (50%) [Water, Glucose Syrup Solids, Spirit Vinegar, Thickener (E1422 Modified Starch), Tomato Paste, Rapeseed Oil, Spice (Cayenne, Coriander, Cumin), Salt, Skimmed Milk Powder, Lemon Juice Concentrate, Herb (Mint, Parsley), Garlic, Paprika (E160c)]

ALLERGY ADVICE: For allergens, see ingredients in **Bold**